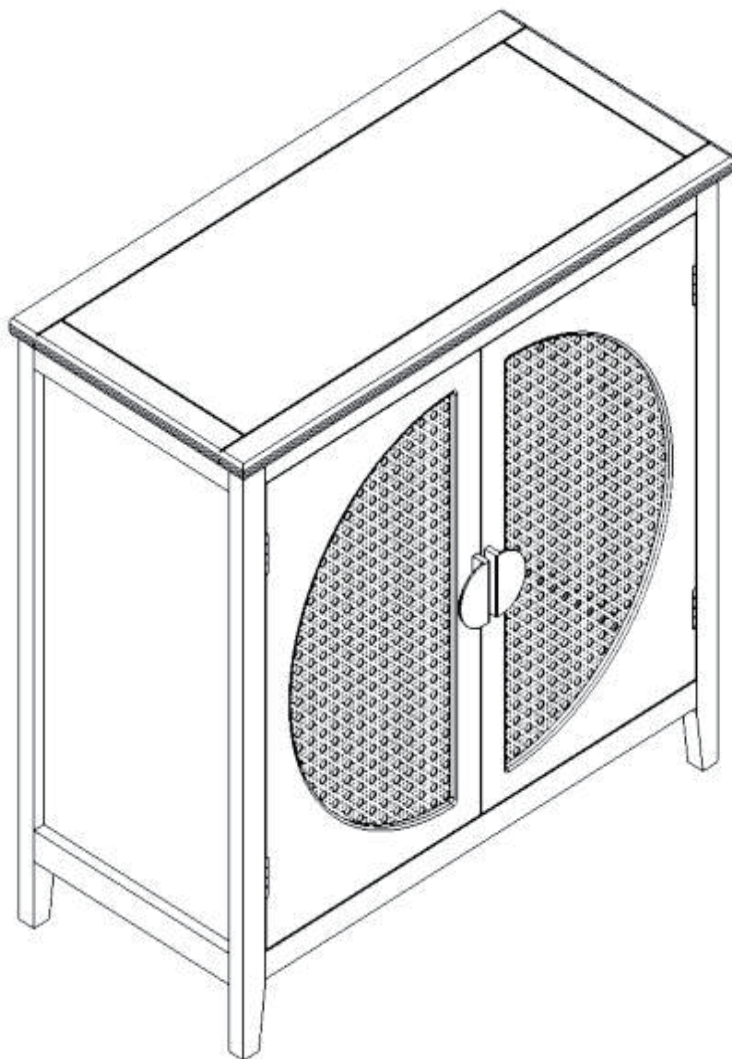


Installation Instruction



Product name

W688105112

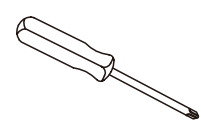
Assembling

Estimated time for assembly

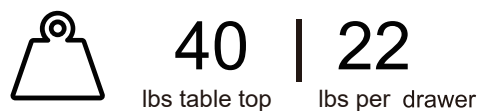


What you need

- Use the packaging carton as a working surface to prevent product damage during assembly
- Phillips head screwdriver



Weight Limitation



What's included

Code	Description	Qty
A	Magnetic Door Catcher	2
B	Screw $\Phi 3 \times 16 \text{mm}$	4
C	Bolt $M6 \times 35 \text{mm}$	12
D	Metal Washer	12
E	Allen Key	1
F	Screw $\Phi 4 \times 16 \text{mm}$	4
G	Plastic corner support	8
H	Screw $\Phi 3 \times 16 \text{mm}$	8
I	Screw $\Phi 3 \times 14 \text{mm}$	12
J	Handle	2
K	Bolt $M4 \times 16 \text{mm}$	4
L	Nylon strap	2
M	Anchor $\Phi 6 \times 30 \text{mm}$	2
N	Screw $\Phi 4 \times 35 \text{mm}$	2
O	Wooden Dowel $\Phi 6 \times 30 \text{MM}$	4

The Hardwares

A



B



C



D



E



F



G



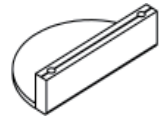
H



I



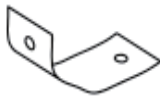
J



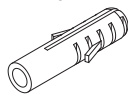
K



L



M



N



O



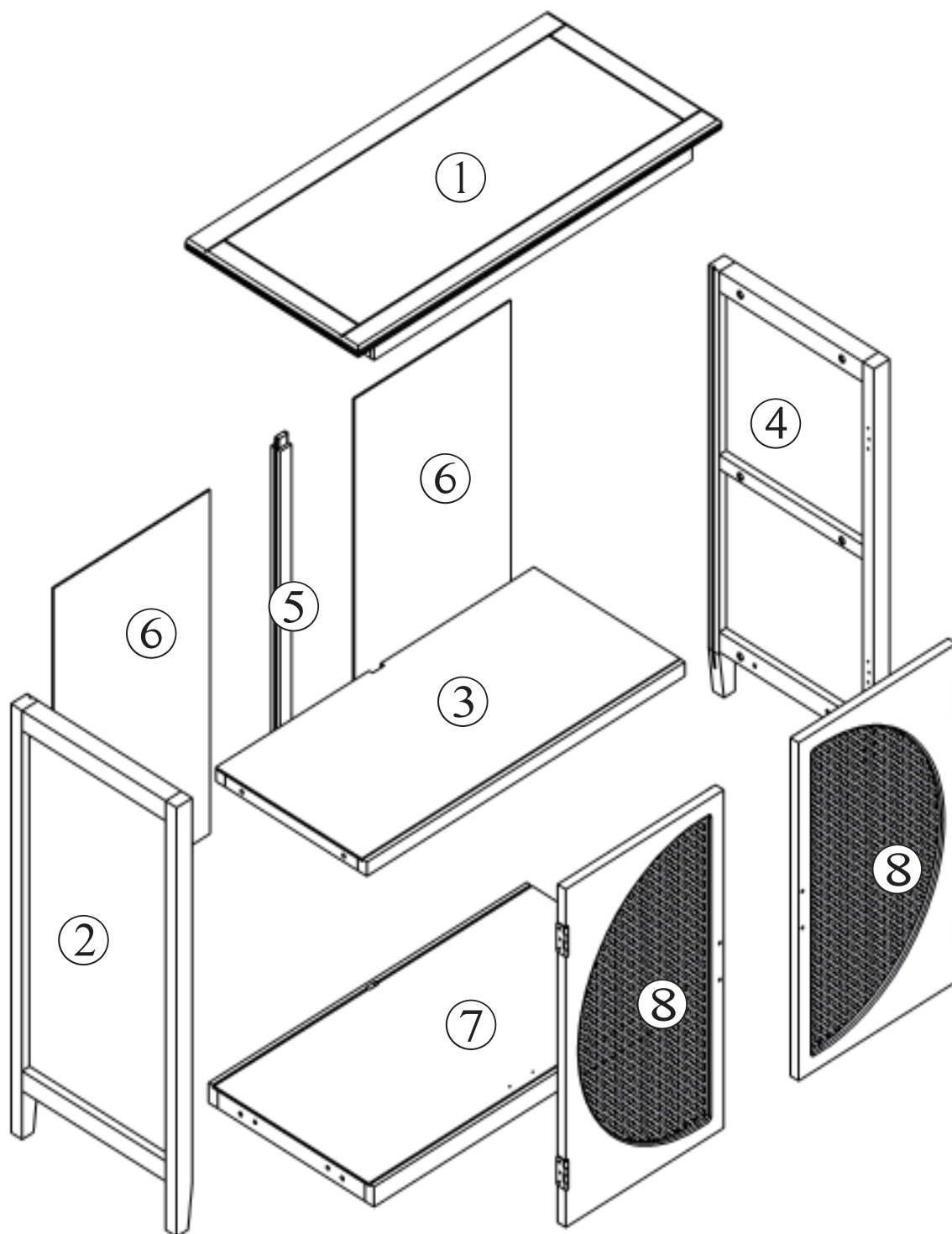
IMPORTANT:

1. Do not tighten bolts / screws completely until all bolts / screws are lined up and inserted into holes.
2. Do not over tighten screws and bolts to avoid stripping.
3. Please use hand tools to assemble this product. Do not use power tools.
4. Must need 2 people to assemble this product.

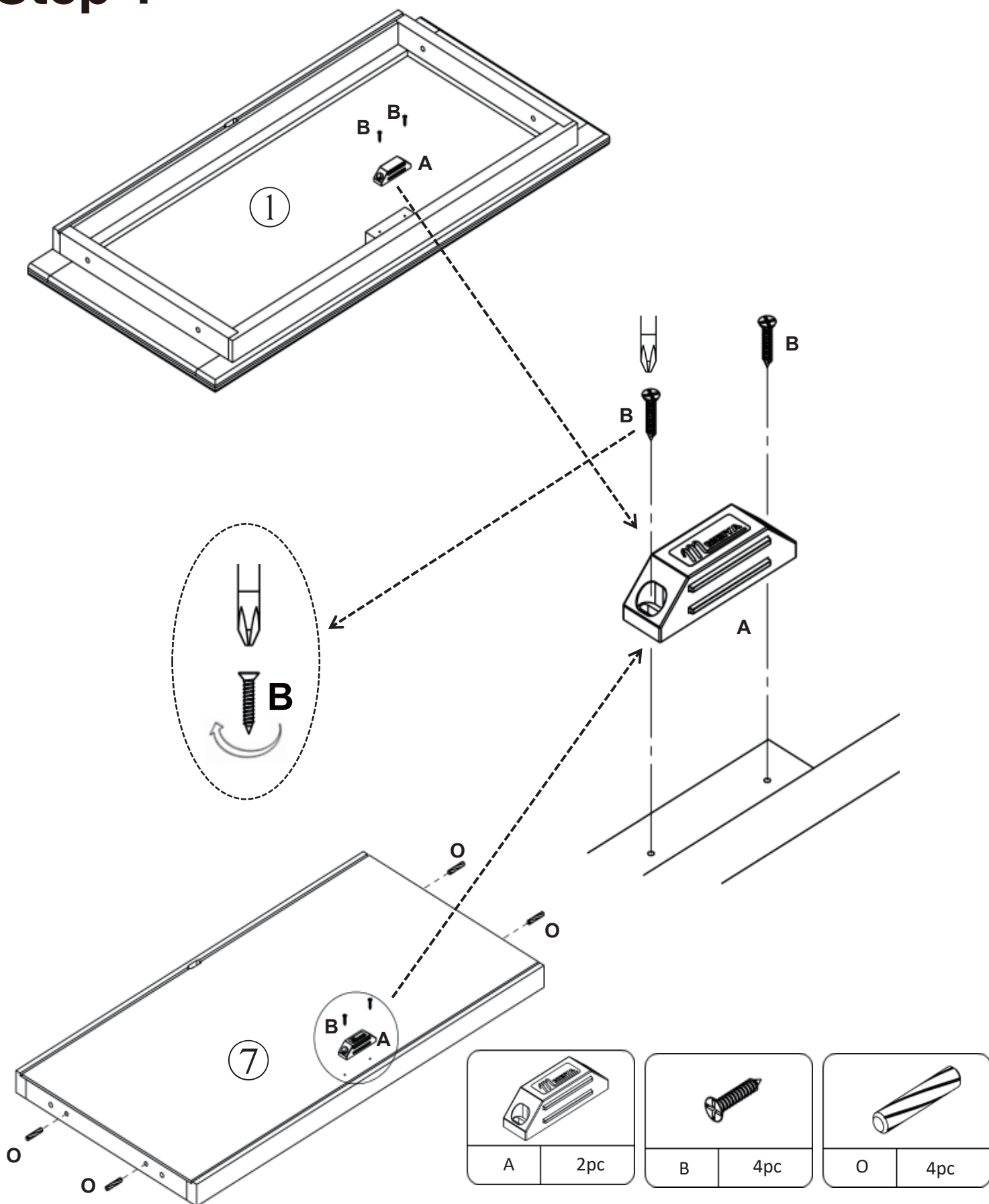
Included Accessories

Code	Description	Qty
1	Cabinet Top	1
2	Left Side Panel	1
3	Shelf	1
4	Right Side Panel	1
5	Back Support Panel	1
6	Back Panel	2
7	Bottom Panel	1
8	Door	2

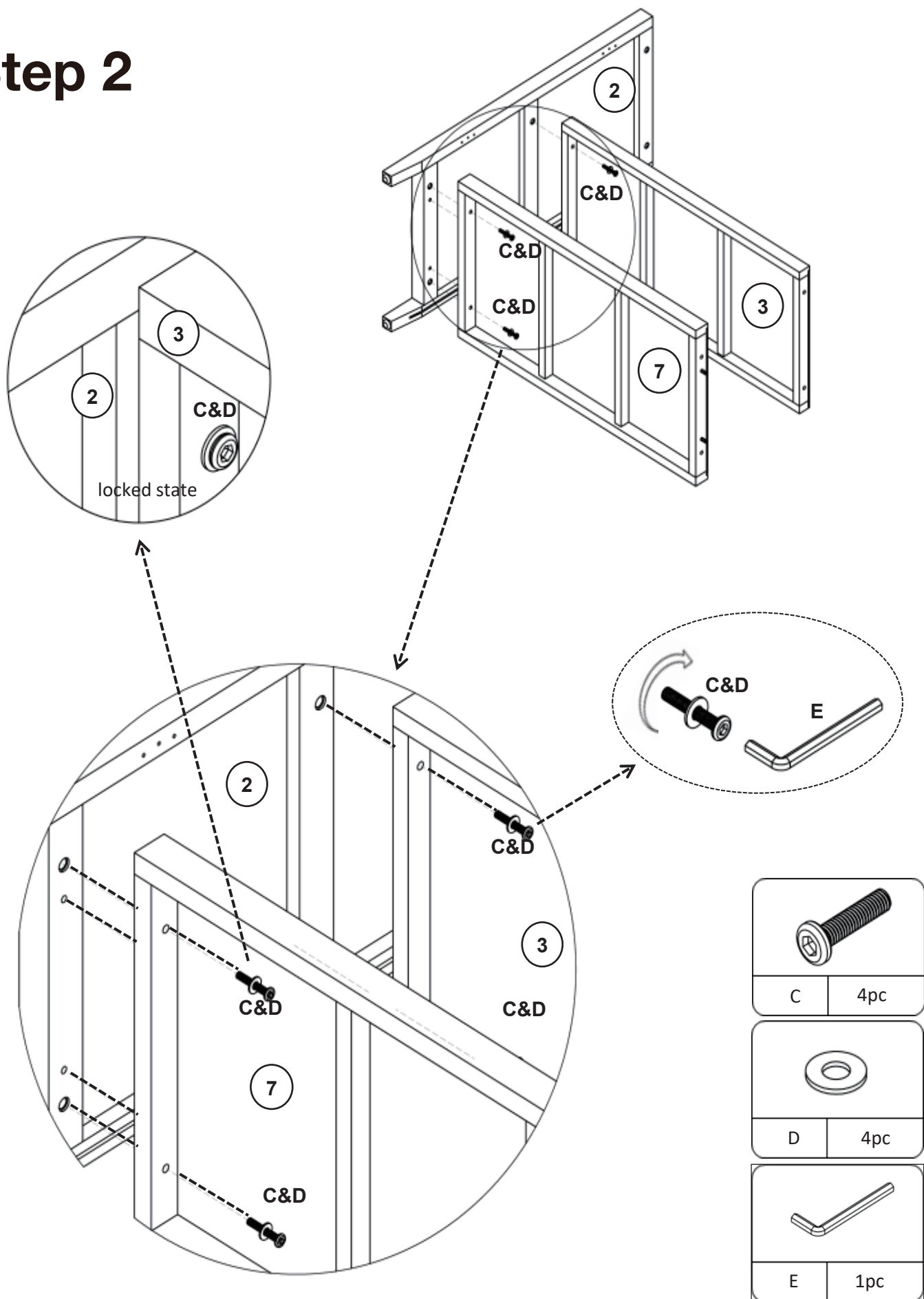
The Accessoriess



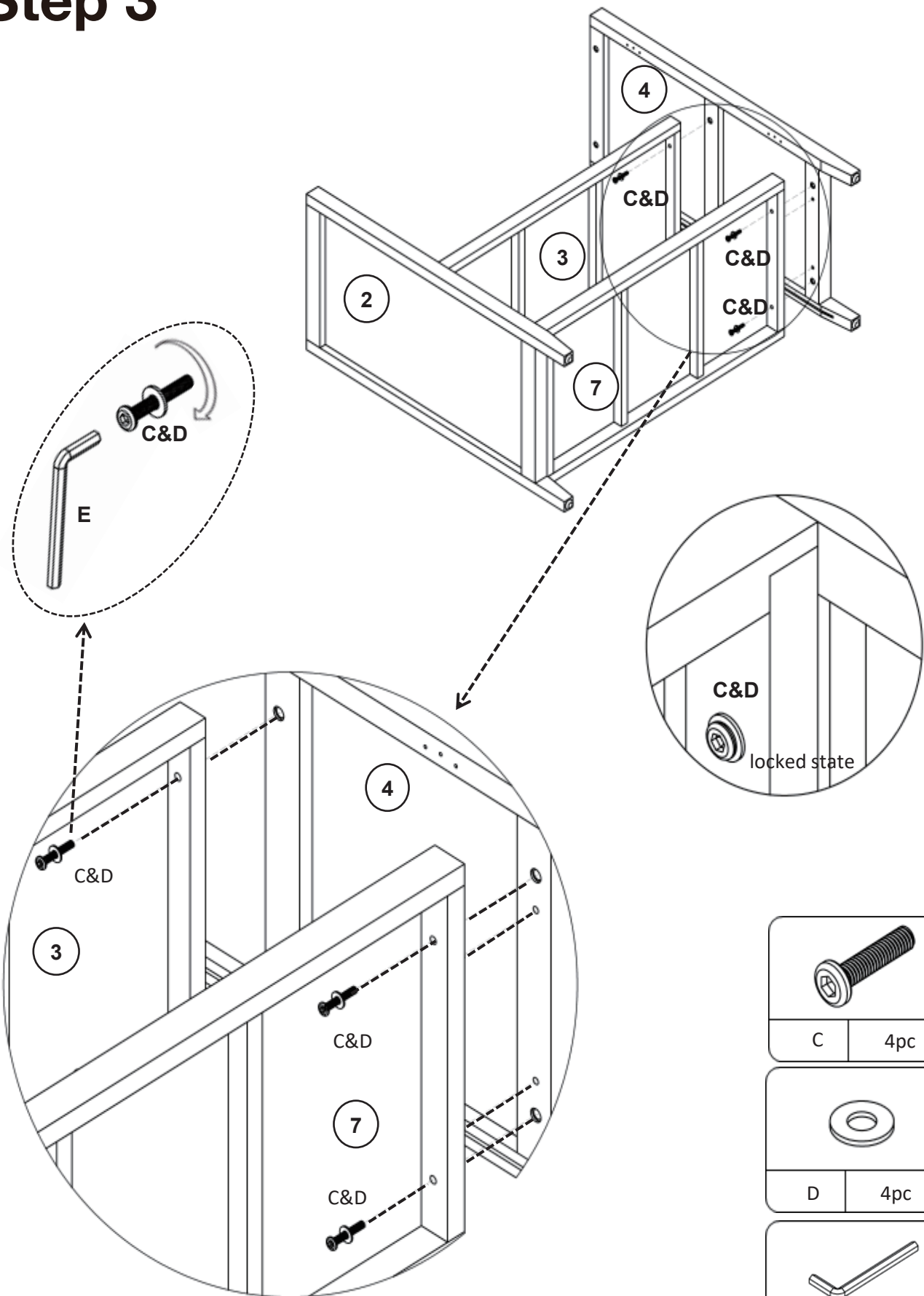
Step 1






Step 2

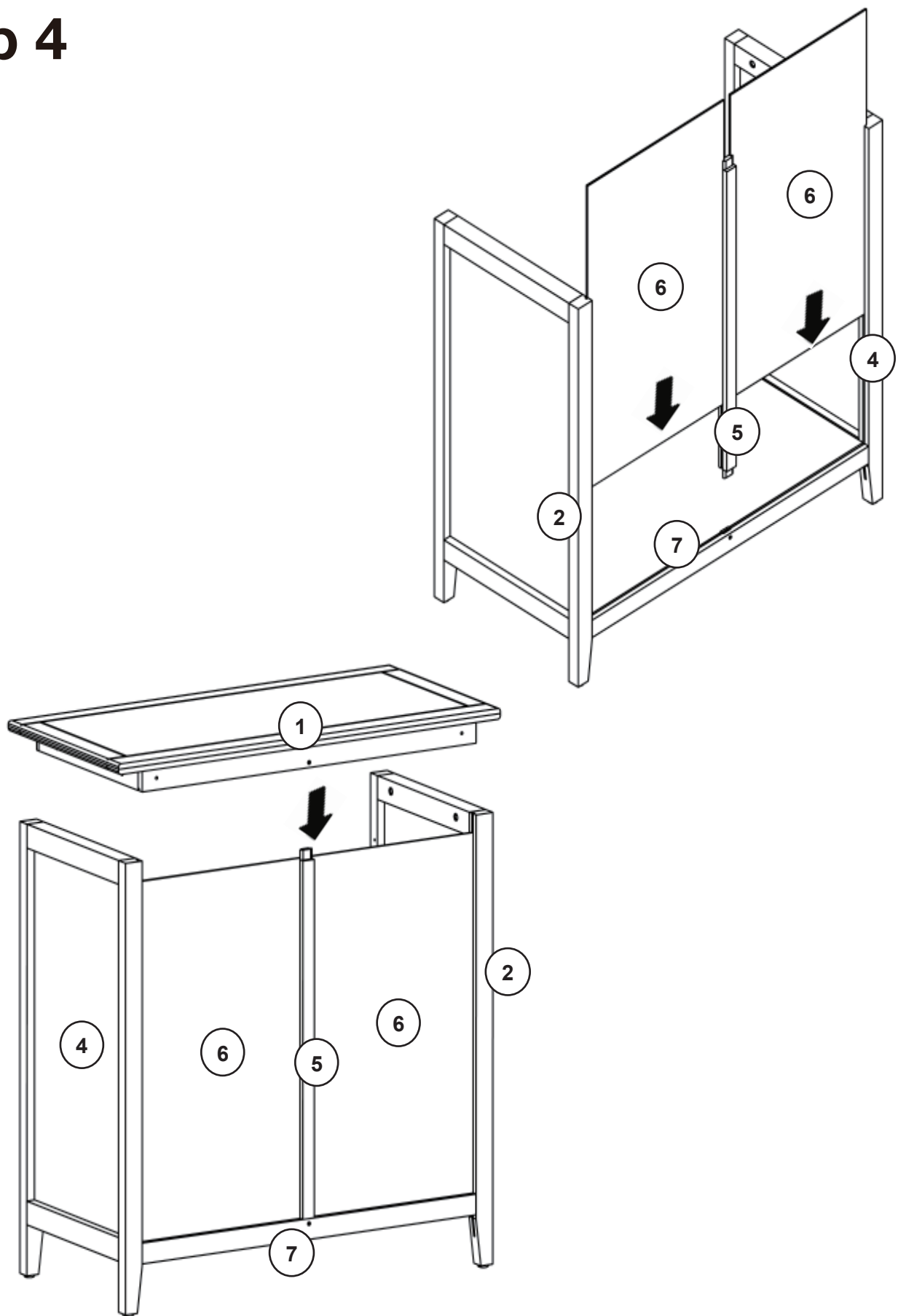


Step 3

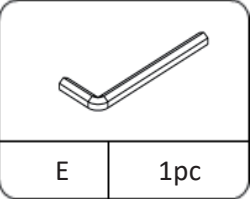
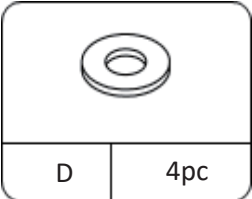
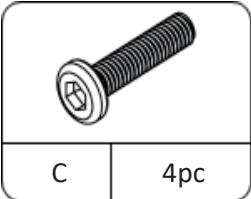
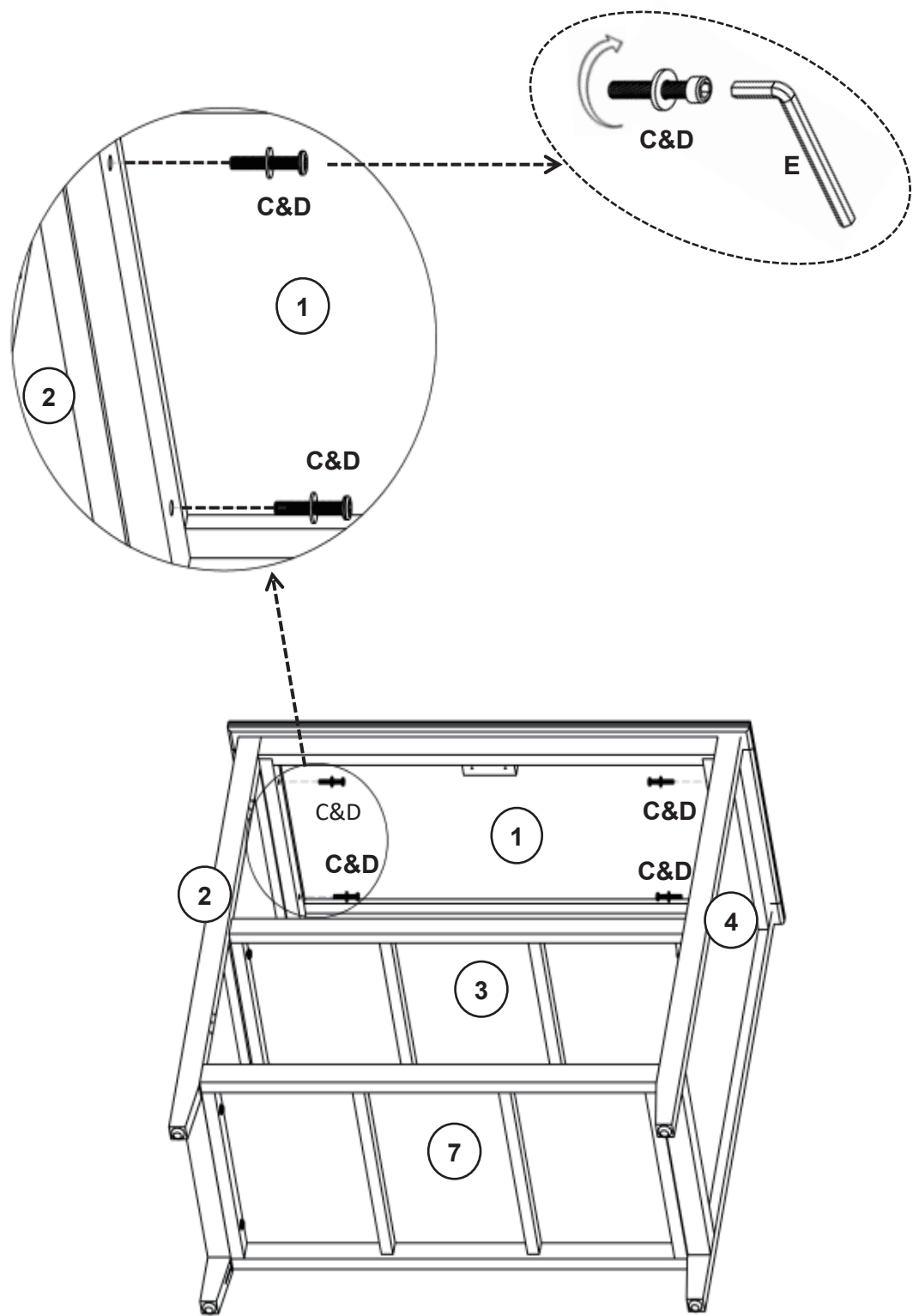


	
C	4pc
	
D	4pc
	
E	1pc

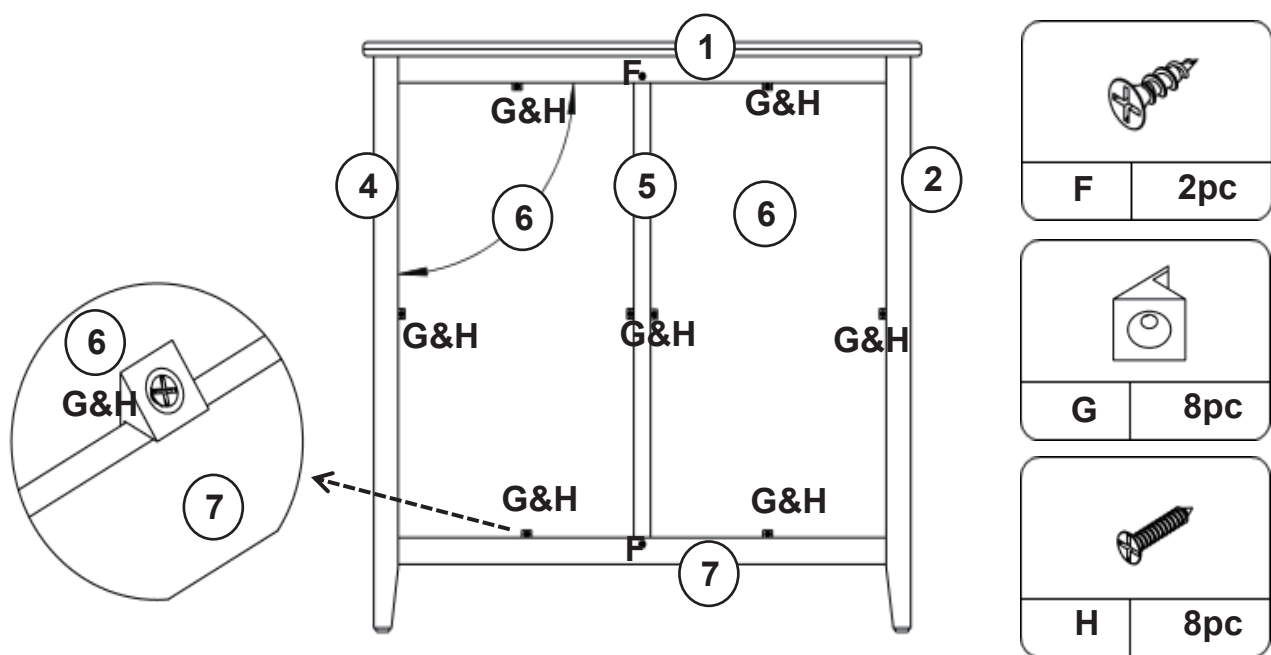
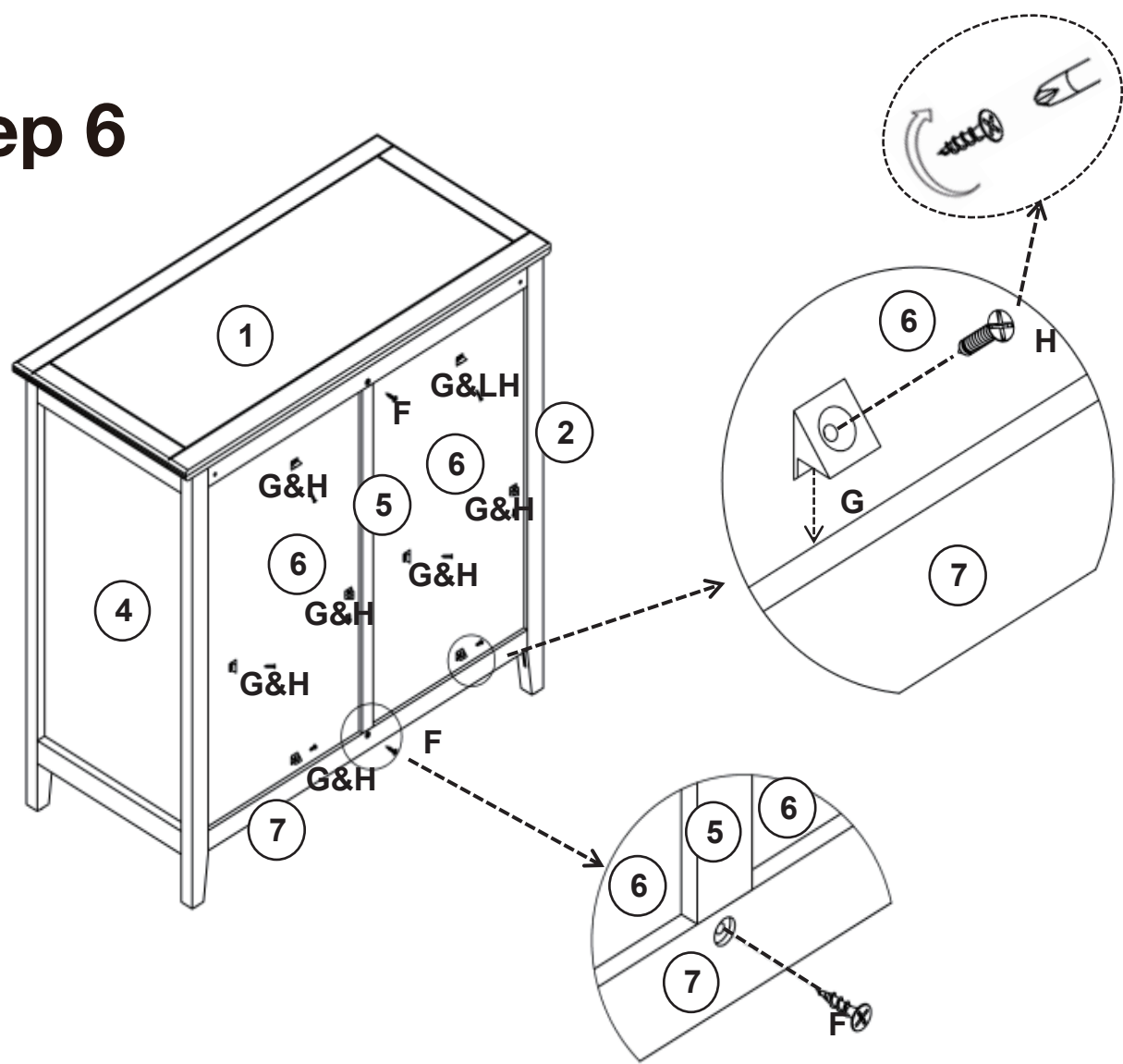
Step 4



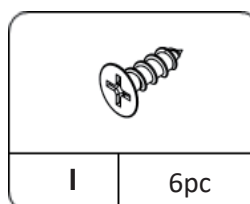
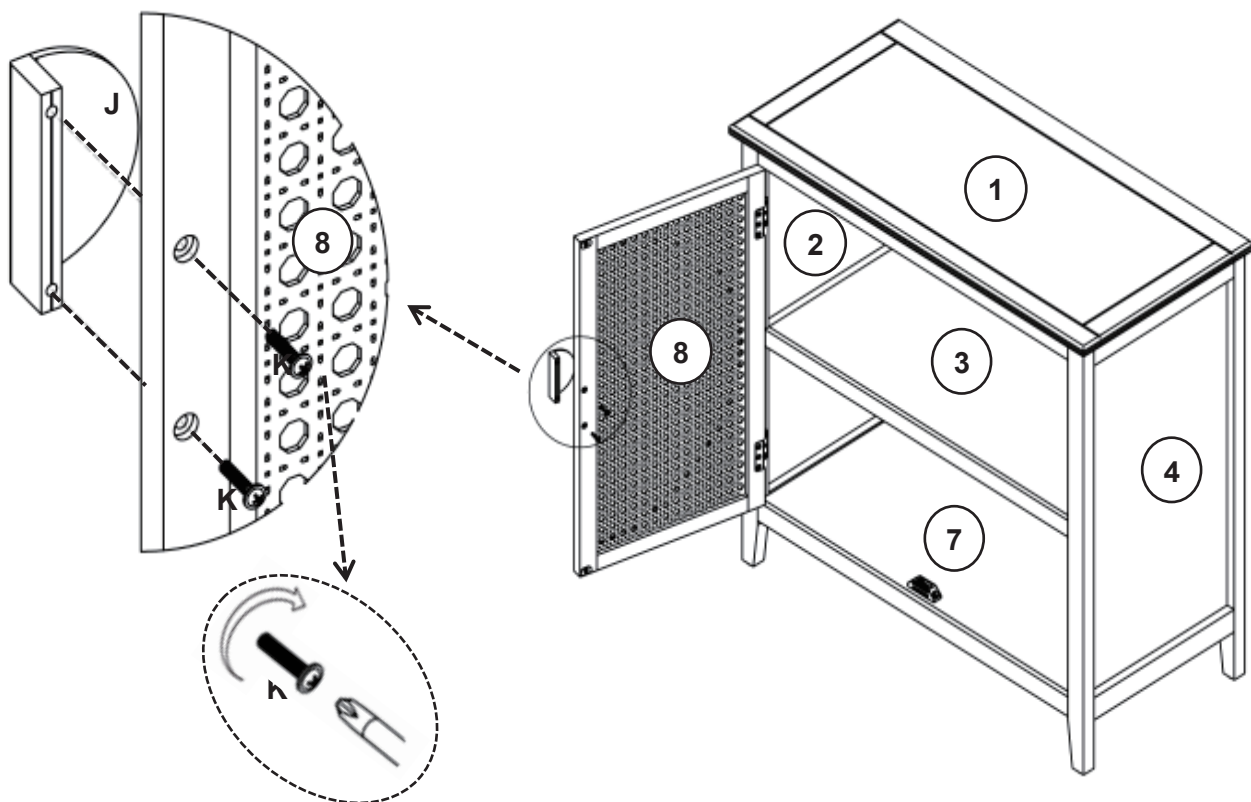
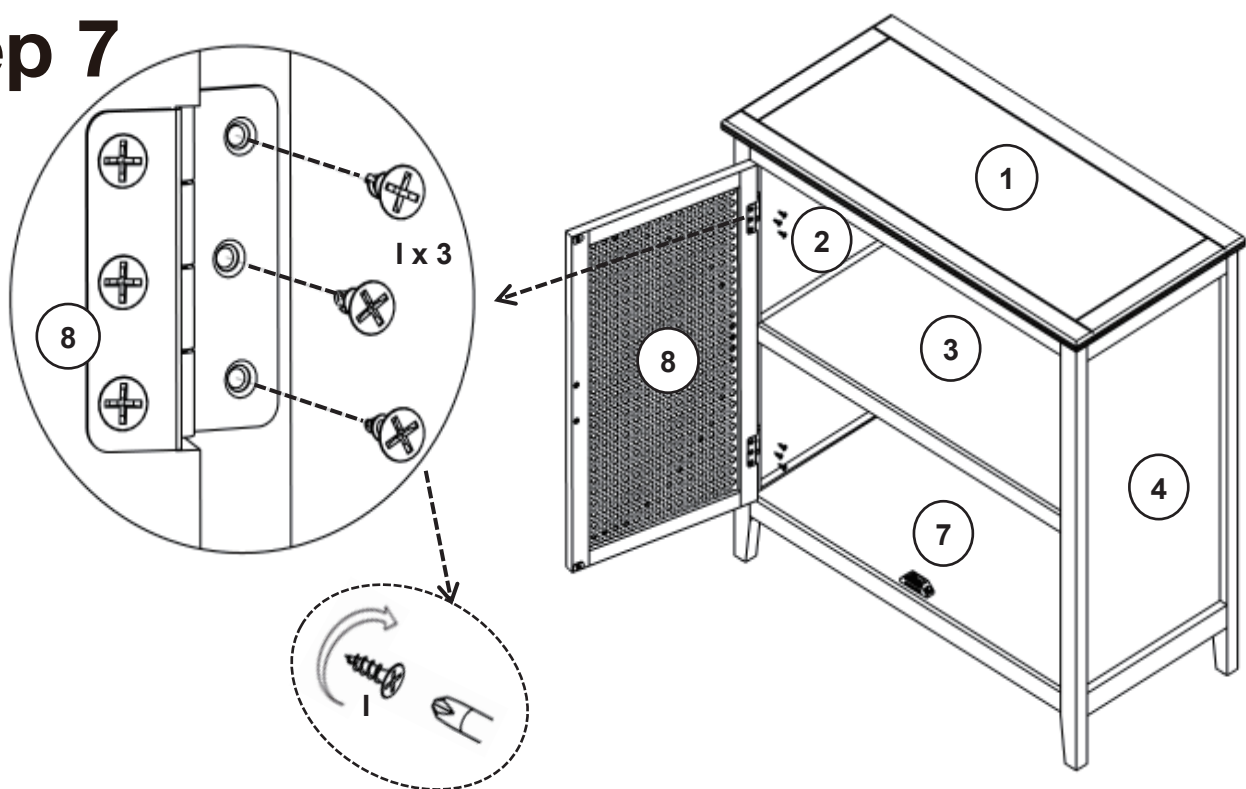
Step 5




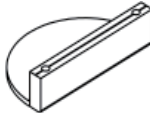

Step 6

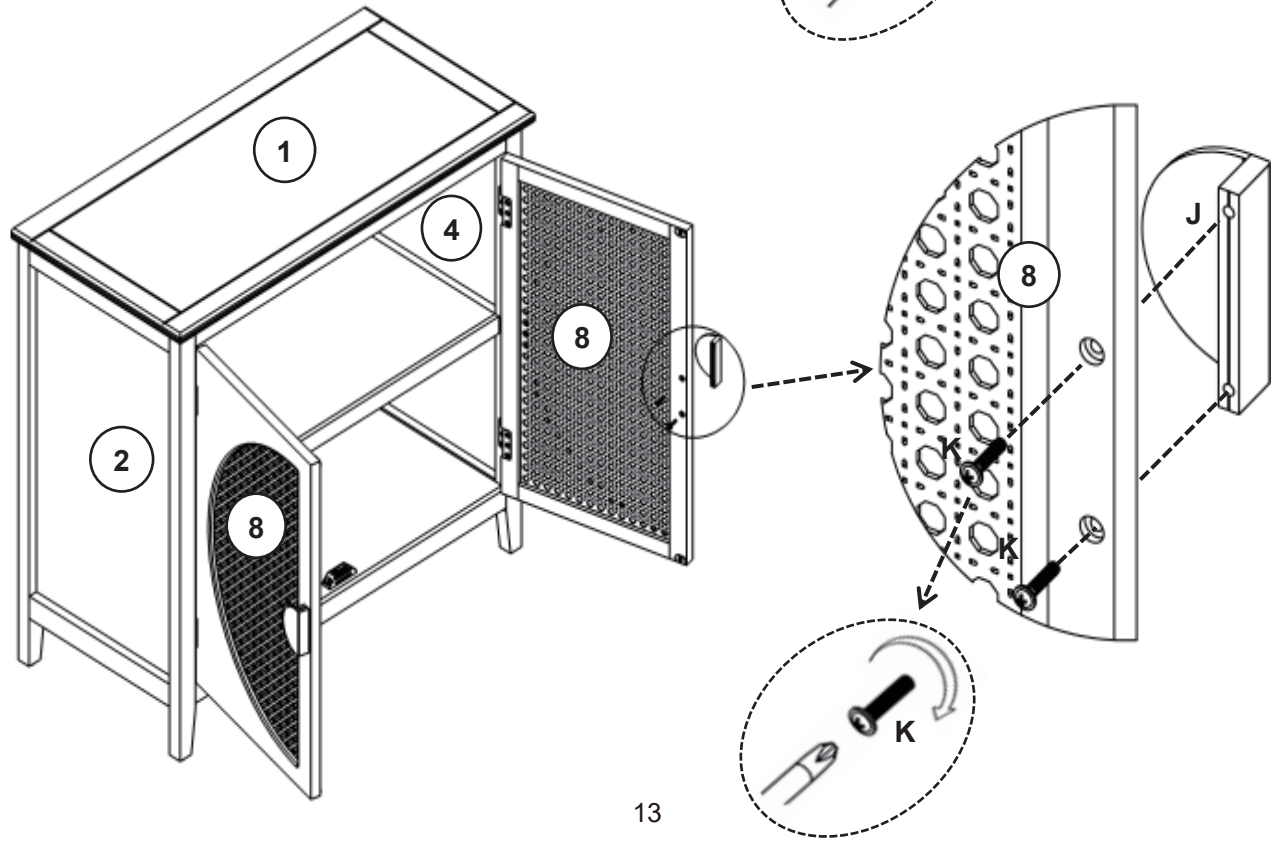
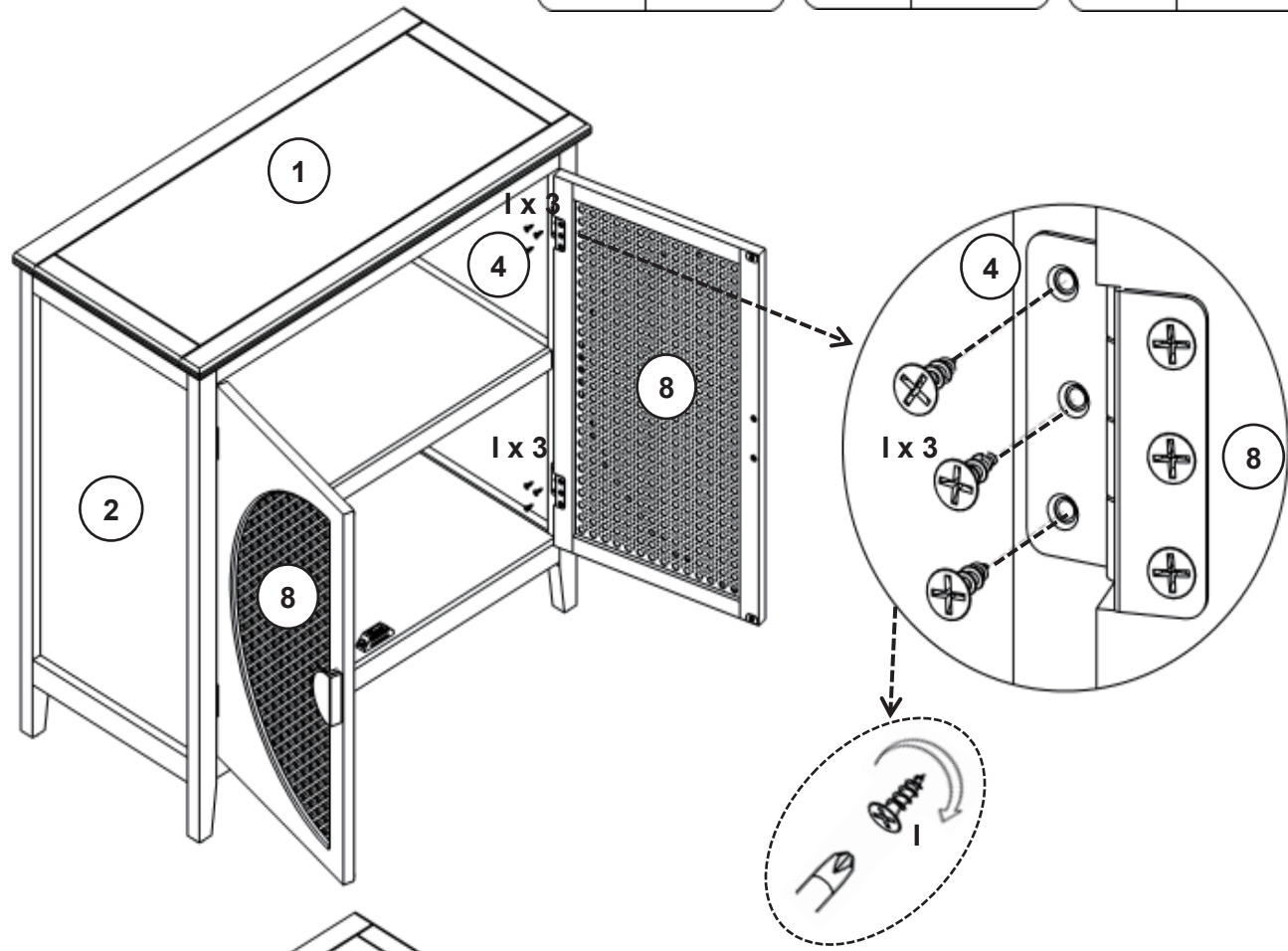


Step 7

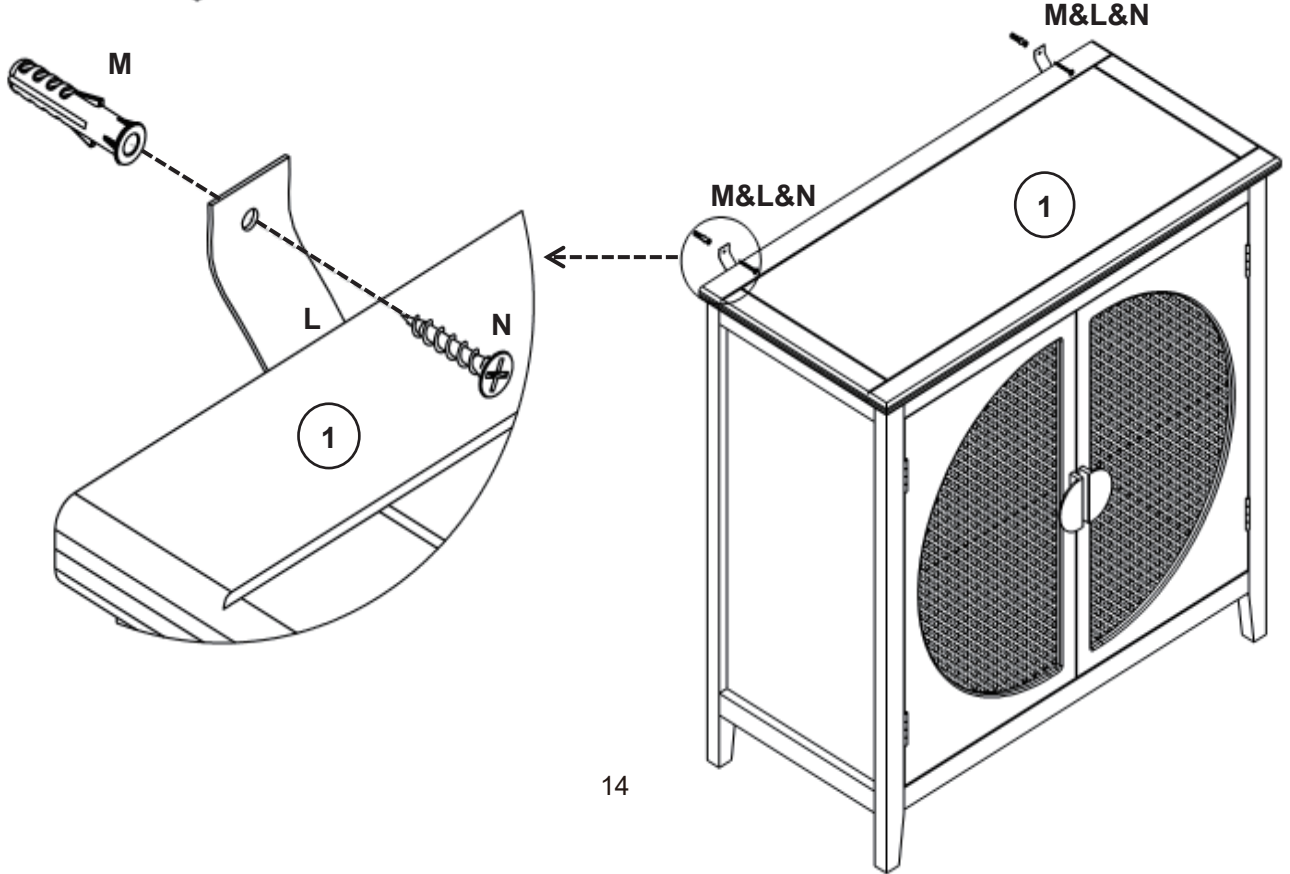
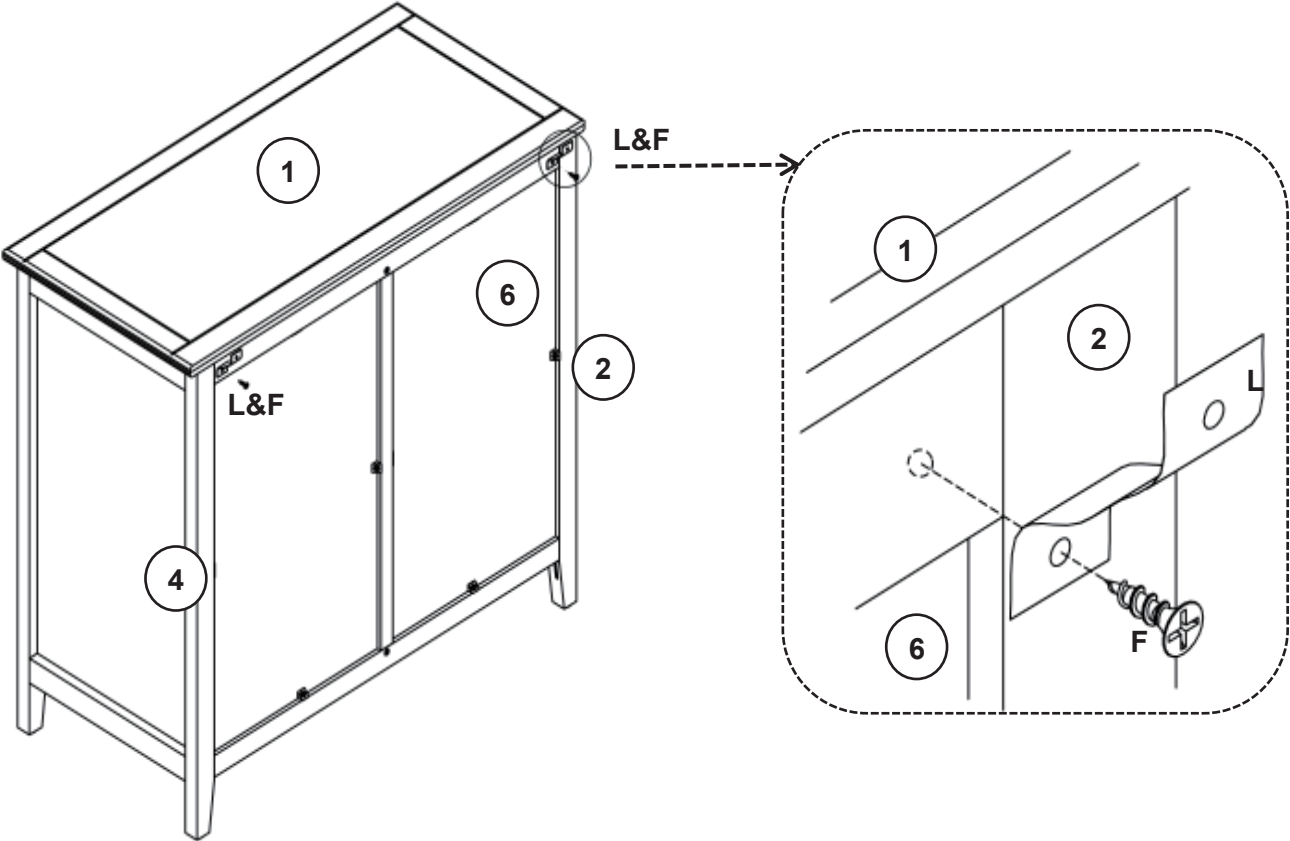
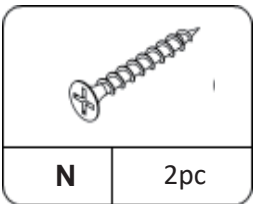
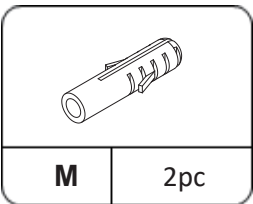
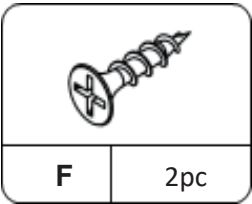
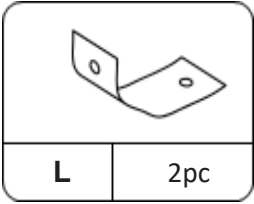


Step 8

					
I	6pc	J	1pc	K	2pc



Step 9



Proper Use

DO NOT	use for commercial purposes
DO NOT	use as a step stool or stand on table
DO NOT	put hot serving liquid directly on the table top
DO NOT	leave spilled liquid on the table top
DO NOT	use table if damaged
DO NOT	exceed weight limit
DO NOT	make temporary repairs
DO NOT	use outdoor

Dear Customer:

Thank you for purchasing our product, we wish you satisfy our service, if you have any further questions or any quality issues, please show the belows number and don't hesitate to contact our Customer Service People. :

W688202305