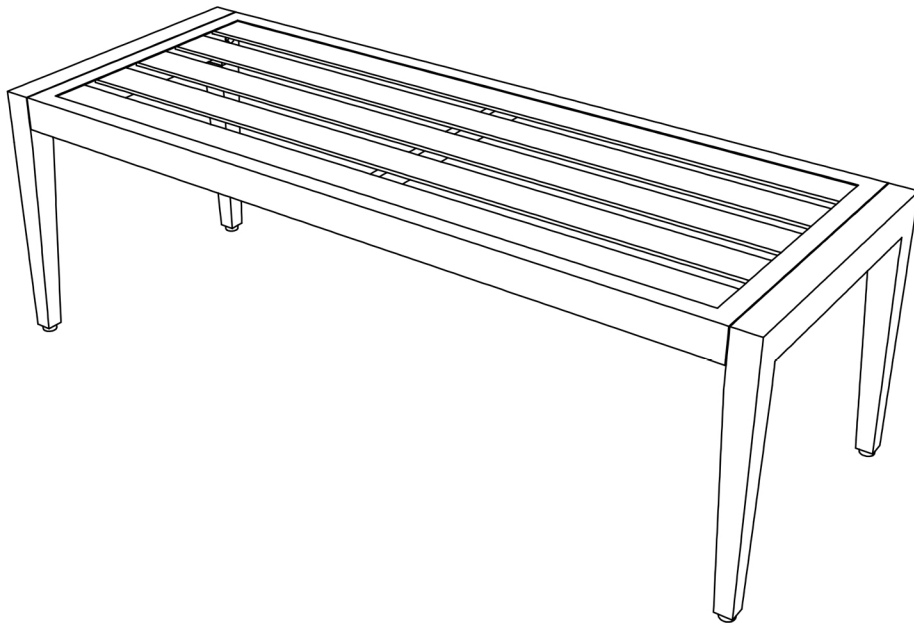


Dining Bench

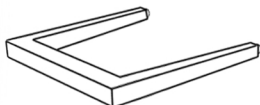
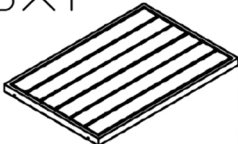


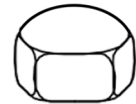

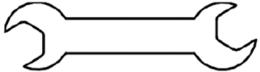
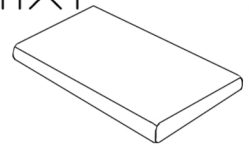
ASSEMBLY INSTRUCTIONS

OE-H-569



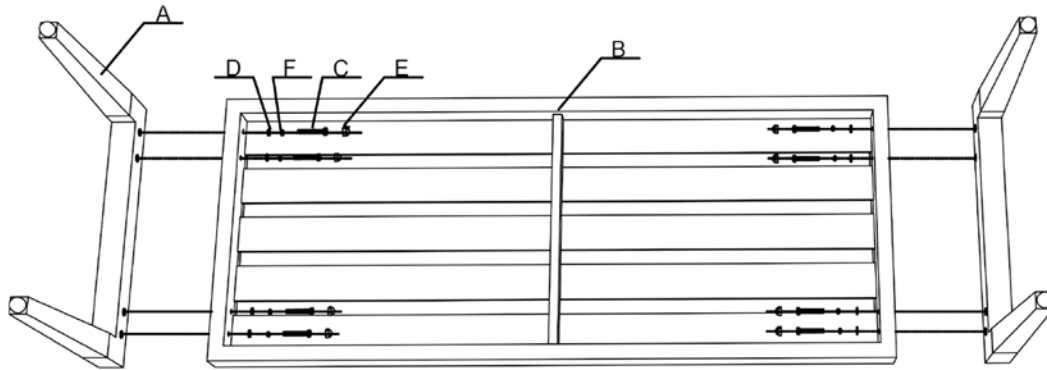
BEFORE ASSEMBLY:

- Please read these instructions carefully before starting assembly. We suggest you carry out the assembly on a soft surface like a carpet, so as to avoid scratching the paint. Keep children away during assembly. This item contains small parts which can be swallowed by children.
- This product was made for the explicit purpose of providing outdoor function and is not to be used as a toy. This product is for residential use only. This product is not intended for commercial use; unintended use will void the warranty.
- This product is not intended for use during inclement or severe weather, that includes but is not limited to rain, hail, sleet, snow, wind, freezing conditions and extreme heat.
- Please note because of the nature of cast metal, you may find roughness on the surface which enhances the beauty of the product and is not a defect.
- Aluminum is soft metal, please do not use power tools, and over tighten may strip threads or break the parts.
- When not in use, store and/or cover the product in a cool dry location. Do not locate the product near any sort of high heat. Do not use the product as a support.
- Children under the age of 10, who are near the product, should be supervised by a competent adult at all times.
- Do not discard any of packaging until you finish the assembly. Keep the assembly instructions for future reference or warranty.

<p>A×2</p>  <p>Chair leg</p>	<p>B×1</p>  <p>Seat</p>	<p>C×8</p>  <p>Bolt(M6×40)</p>
<p>D×8</p>  <p>Washer(M6)</p>	<p>E×8</p>  <p>Bolt cap(M6)</p>	<p>F×8</p>  <p>Lock Washer</p>
<p>G×1</p>  <p>Wrench</p>	<p>H×1</p>  <p>Cushion</p>	

1

Step 1: Place all the parts on a clean and soft surface, identify all the parts and hardware kits against parts list. Turn over the **Seat(B)** onto a flat surface; Attached 2 Chair **Legs(A)** with parts (**D,F,C,E**) to the **Seat(B)** pre-installed by manufacturer on the seat as **Fig(1)** and tighten all **bolts**.



2

Step 2: Turn over again and check that all the parts are securely connected tighten all screws fully. Then tie the cushion on the bench.

