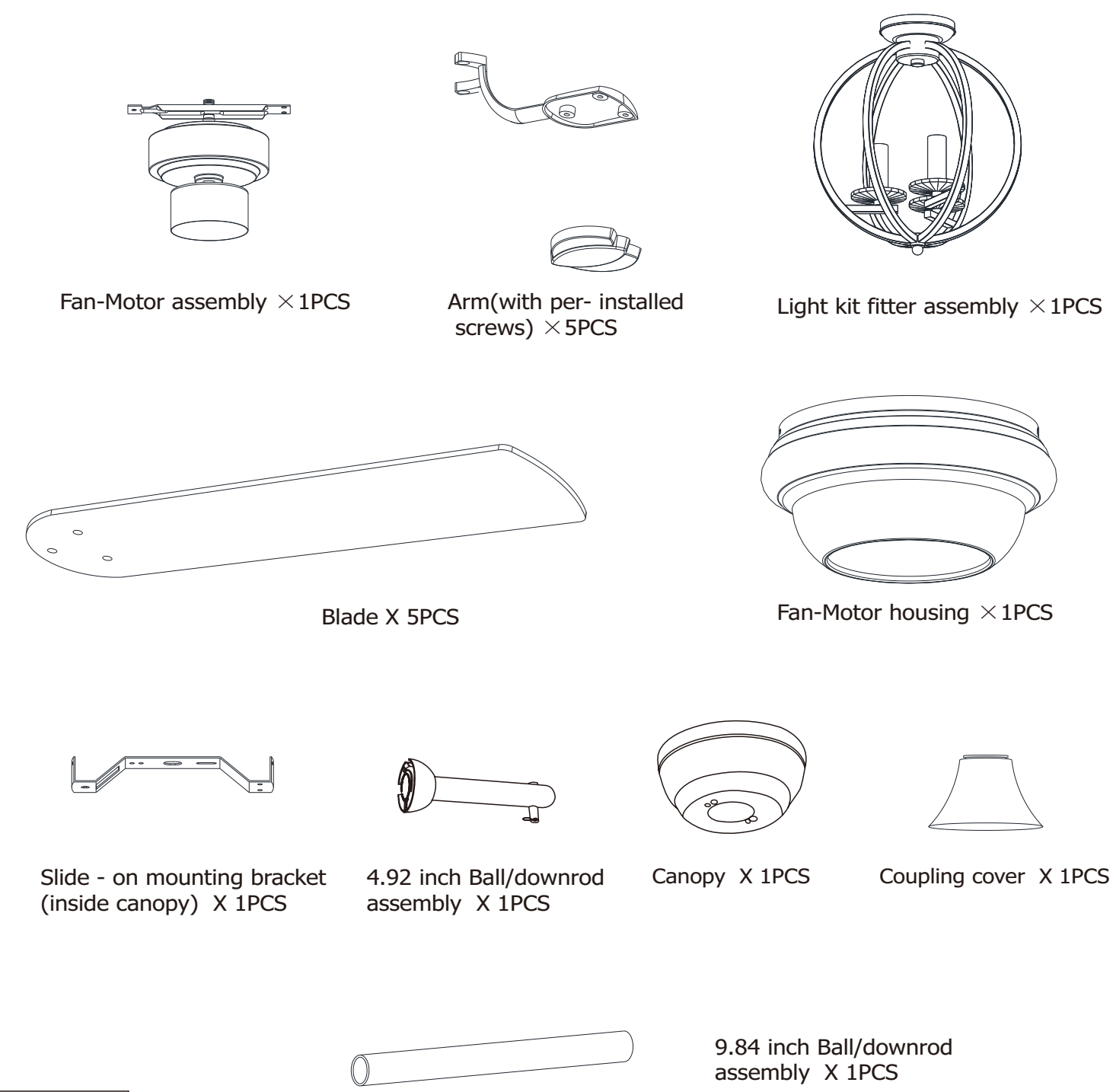
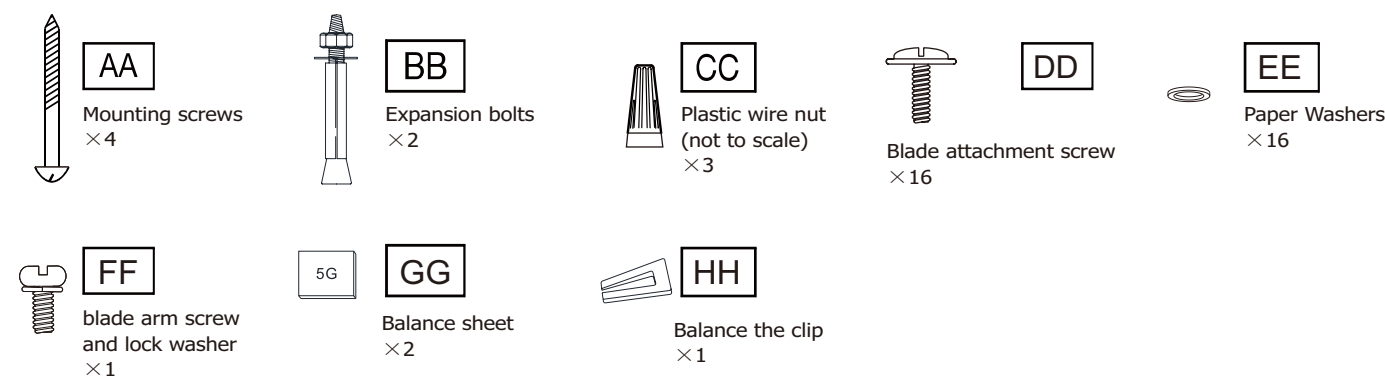


**52-INCH DEROCARE CEILING FAN
USE AND CARE GUIDE**

Pre-Installation

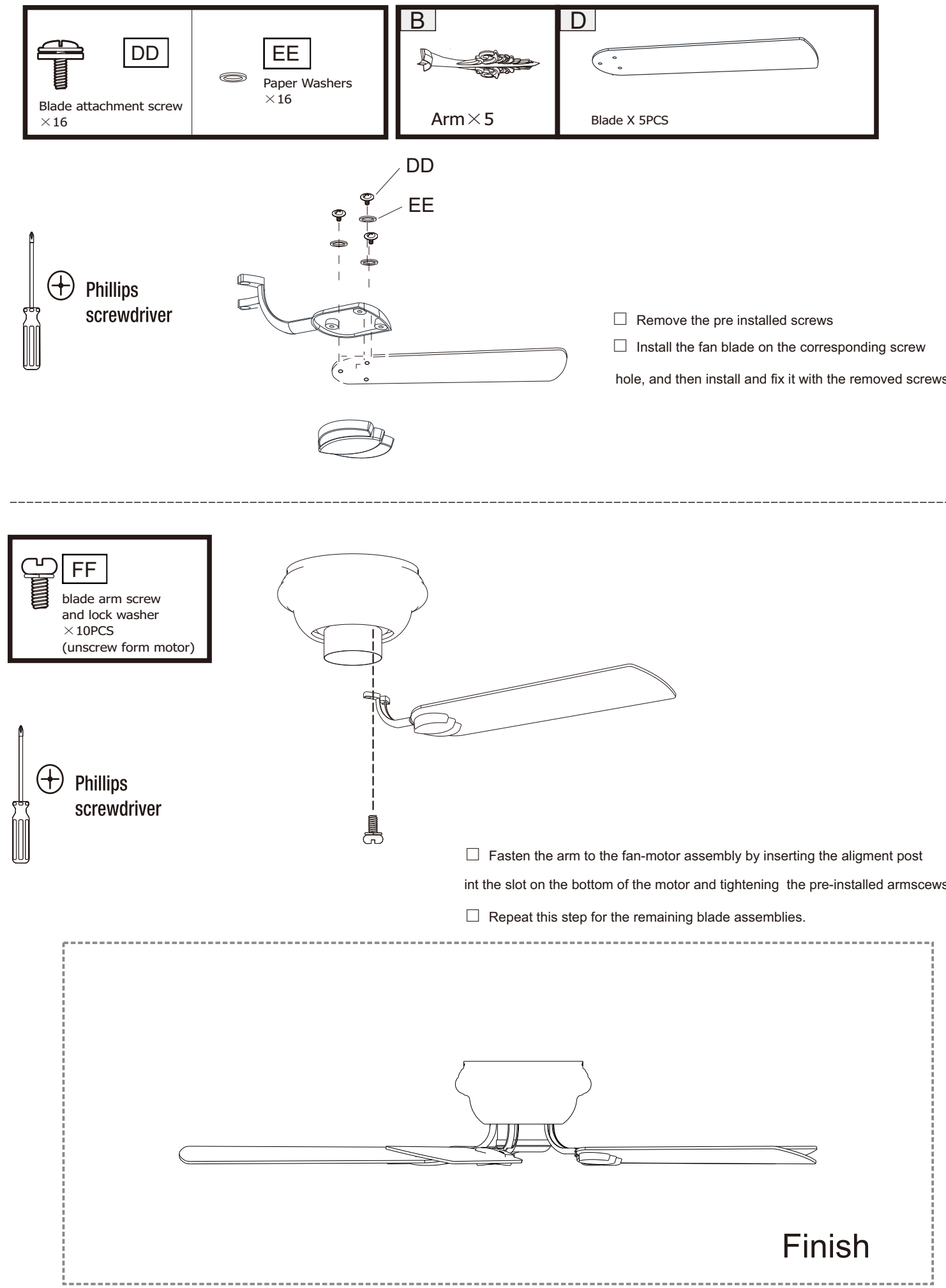


Parts Kit

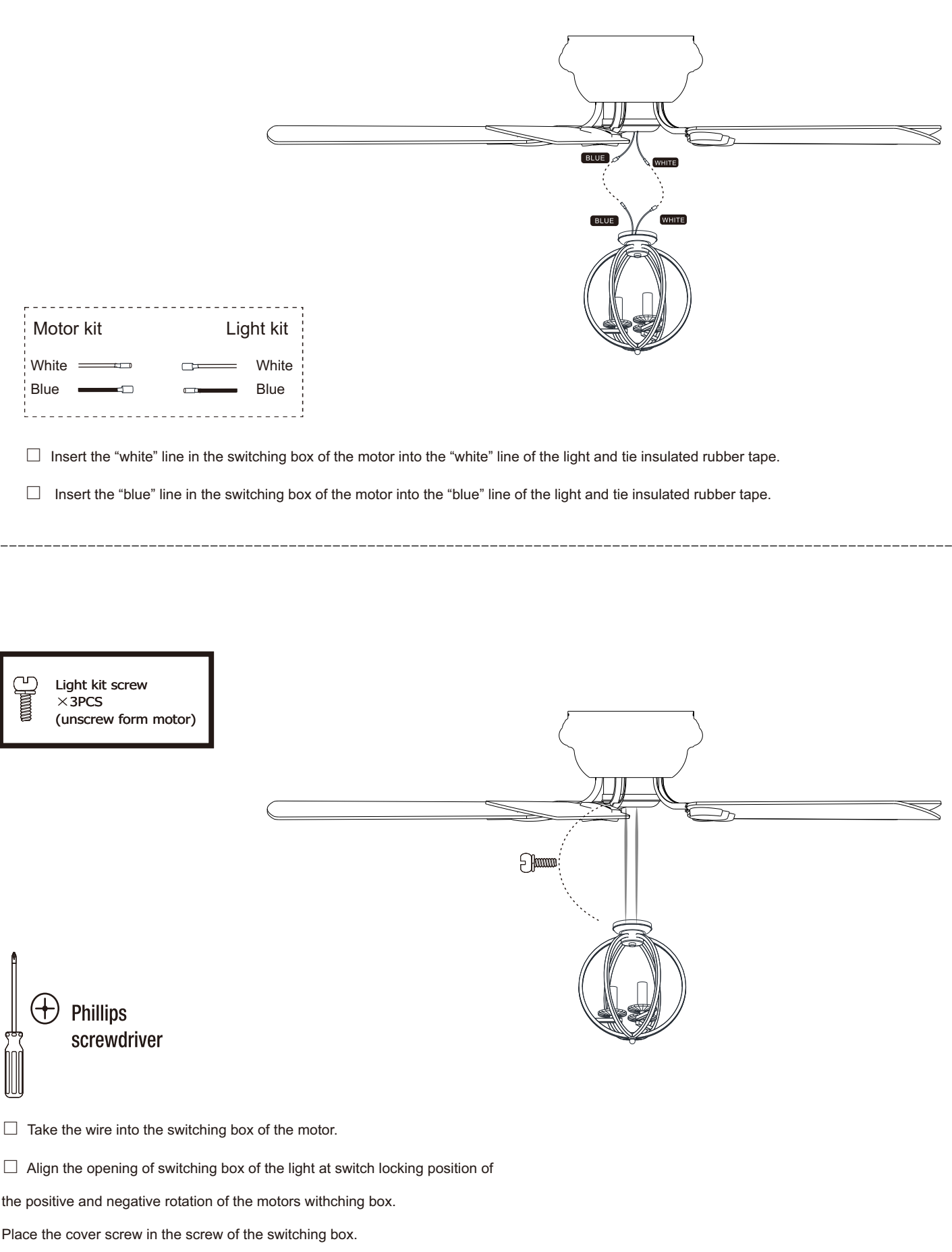


NOTE Hardware not shown to actual size.

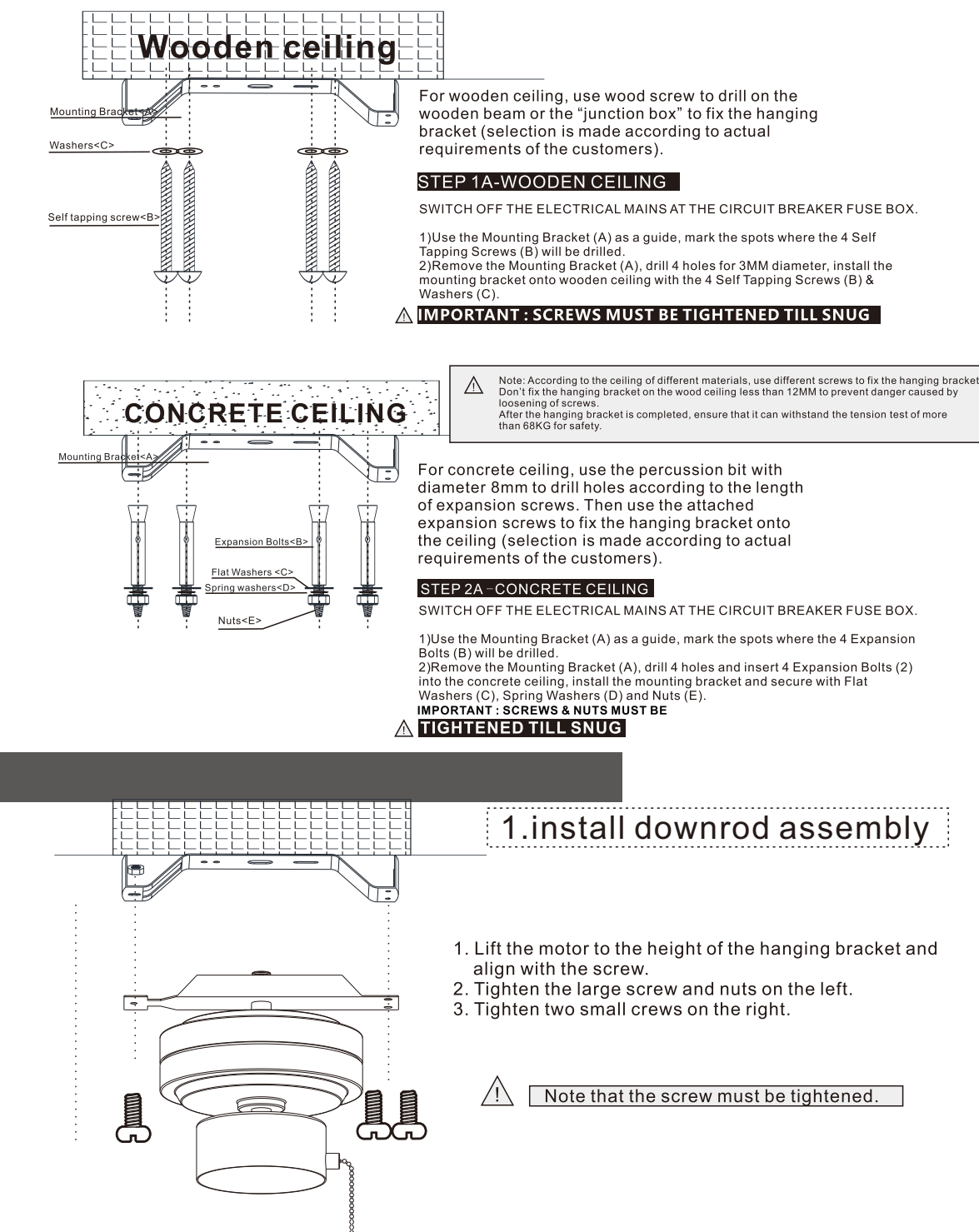
Fastening the blade arms to the motor



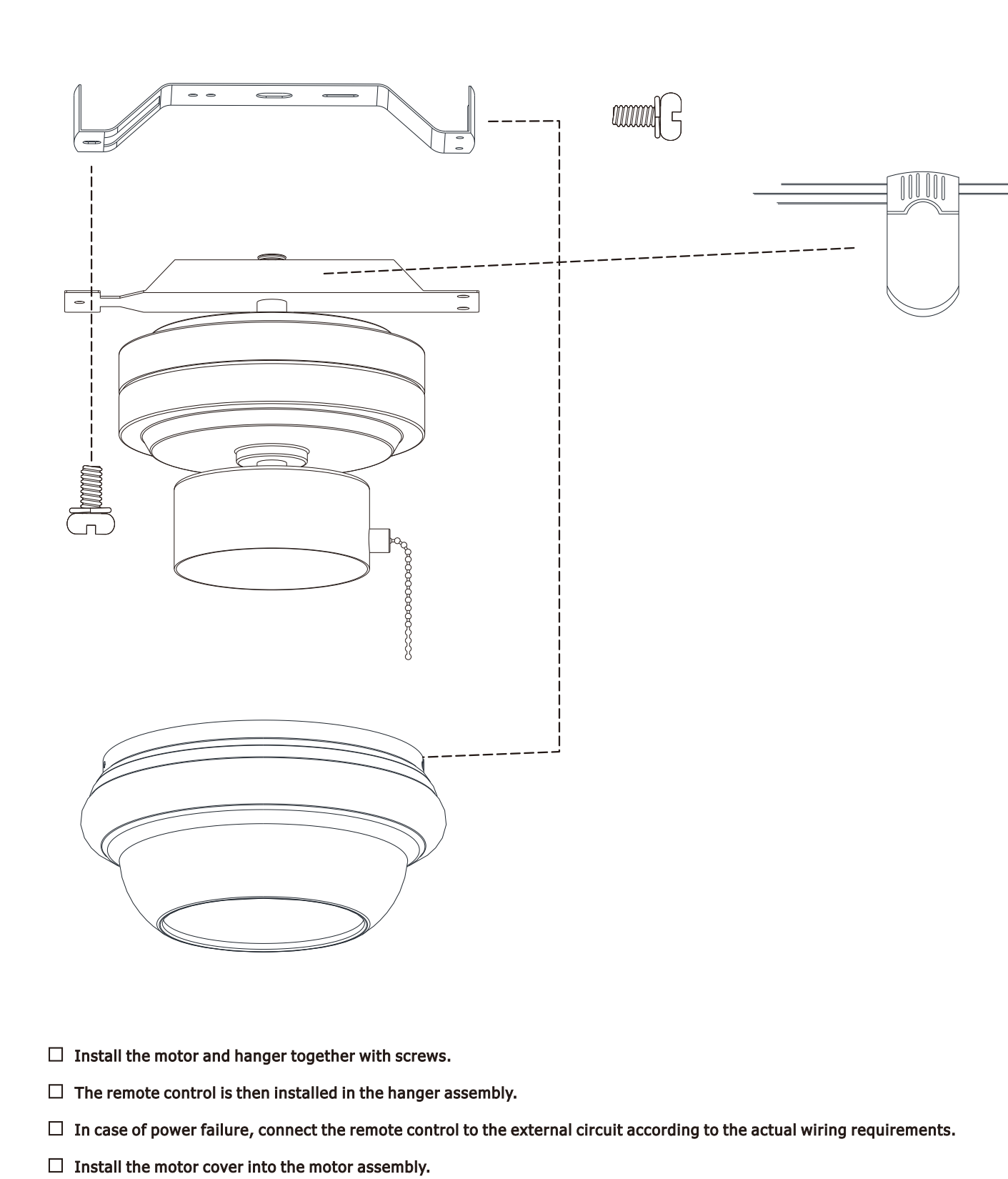
Assembly-Attaching the Lights



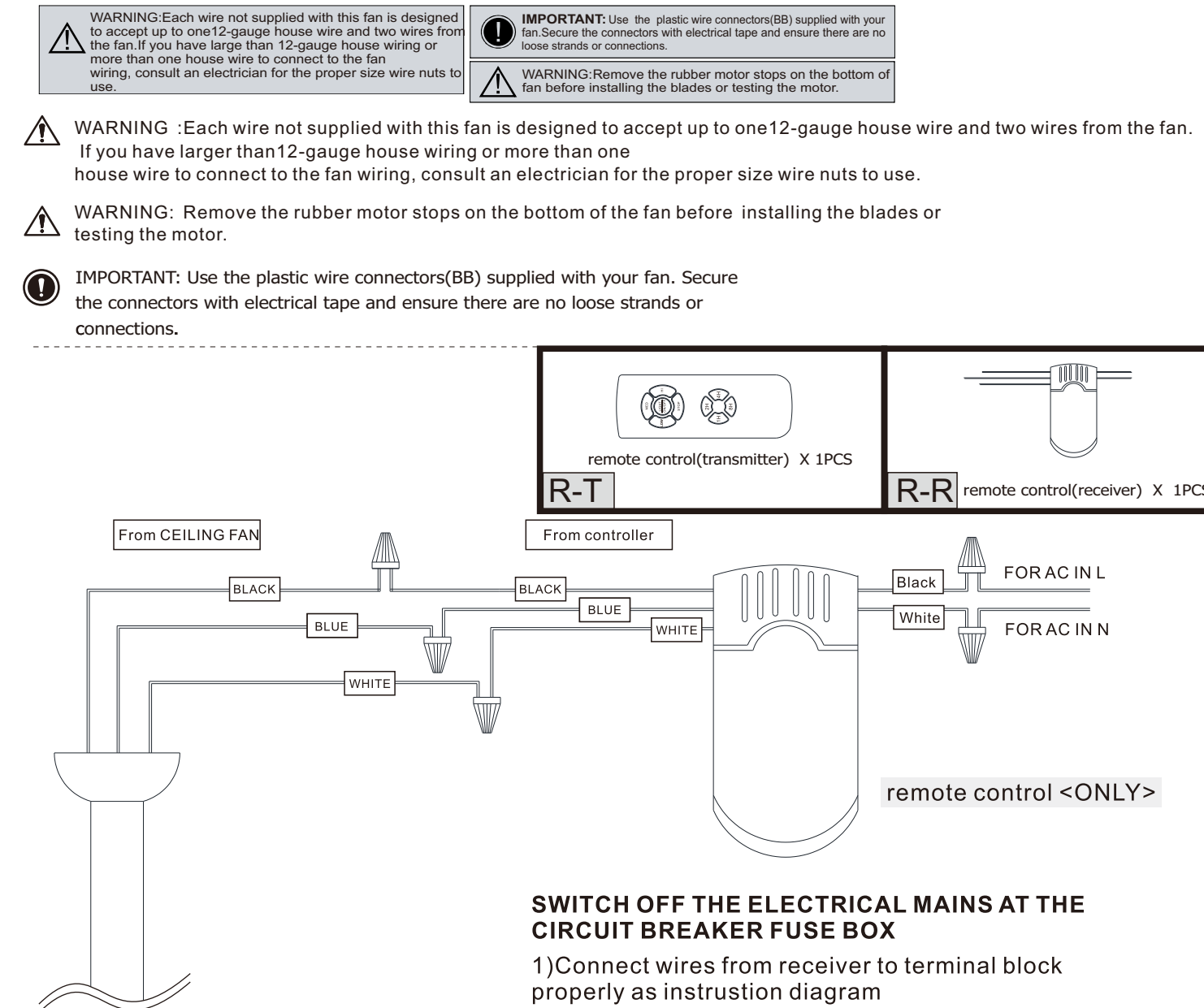
Installation of the hanging bracket



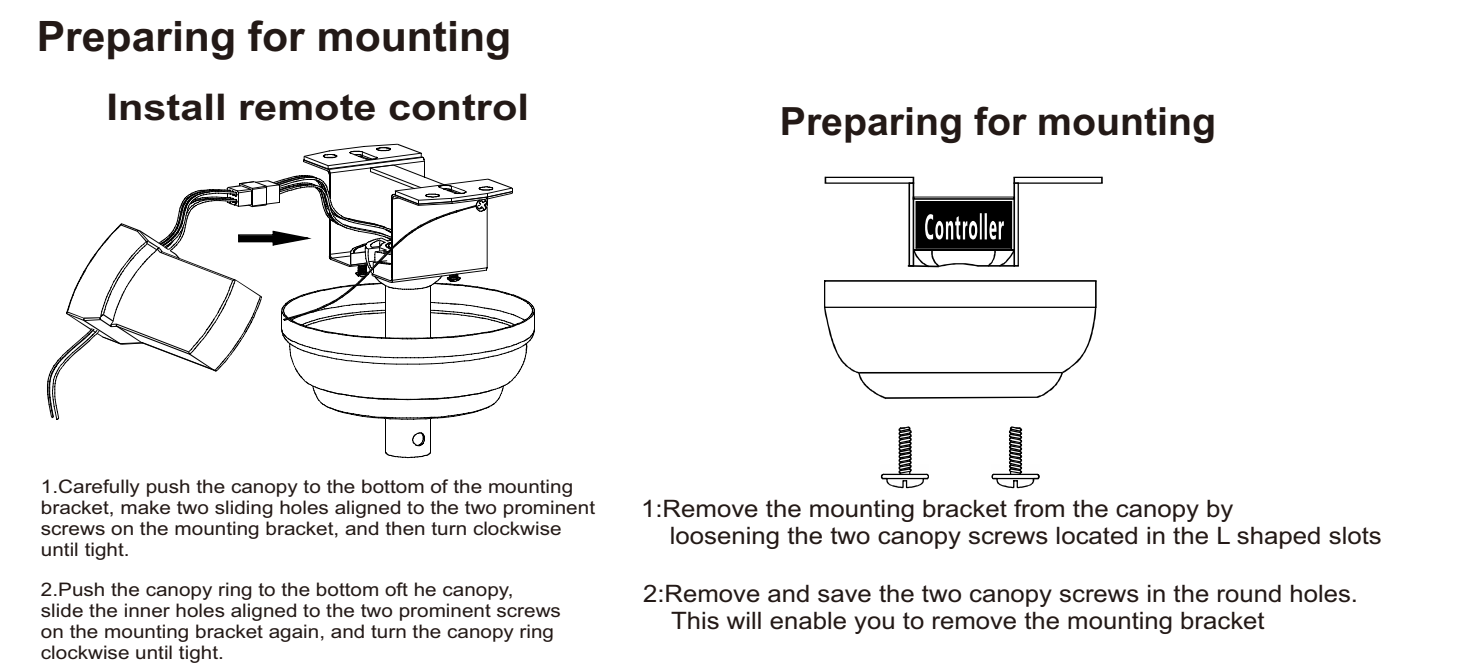
Install downrod assembly



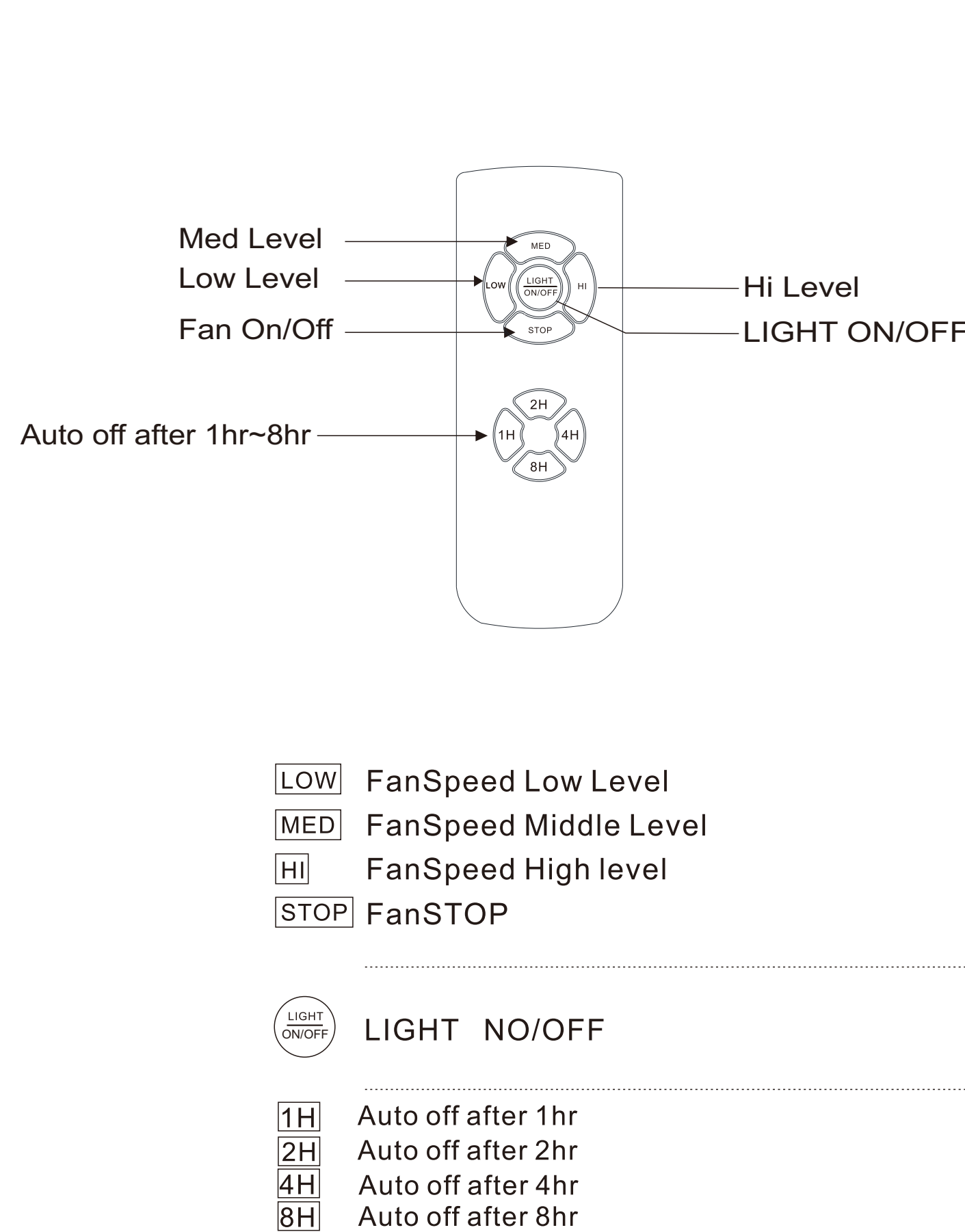
Making the electrical connections



Assembly - Hanging the Fan(continued)



Use of remote control



SWITCH OFF THE ELECTRICAL MAINS AT THE CIRCUIT BREAKER FUSE BOX.

- 1) Use the Mounting Bracket as a guide, mark the spots where the 4 Self Tapping Screws will be drilled.
- 2) Remove the Mounting Bracket, drill 4 holes for 3MM diameter, install the mounting bracket onto wooden ceiling with the 4 Self Tapping Screws & Washers

- Install the motor and hanger together with screws.
- The remote control is then installed in the hanger assembly.
- In case of power failure, connect the remote control to the external circuit according to the actual wiring requirements.
- Install the motor cover into the motor assembly.

1. Carefully push the canopy to the bottom of the mounting bracket, make two sliding holes aligned to the two prominent screws on the mounting bracket, and then turn clockwise until tight.
2. Push the canopy ring to the bottom of the canopy, slide the inner holes aligned to the two prominent screws on the mounting bracket again, and turn the canopy ring clockwise until tight.

- 1H** Auto off after 1hr
- 2H** Auto off after 2hr
- 4H** Auto off after 4hr
- 8H** Auto off after 8hr