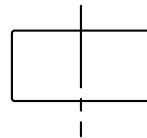
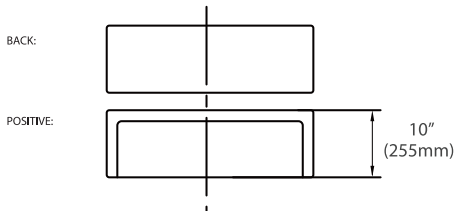
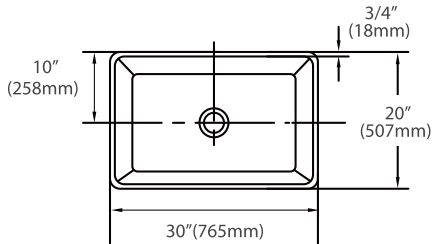


User Manual

RCC3020



RCC3020



Luxury 30" Modern Farmhouse Kitchen Sink

SIZE: 30" L x 20" W x 10" H FINISH: White, Glazed



If you have any questions, please feel free to contact us through your order

- Our friendly, specially trained, technical support team will be happy to assist you with any concerns you may have regarding your product.

ATTENTION INSTALLER

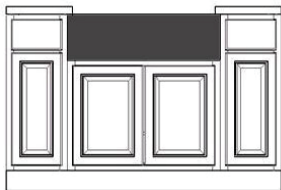
- We recommends that this sink be installed only by a professional installer.
- Inspect the sink and box contents immediately upon delivery. If you see any shipping damages on the sink, or missing parts, contact our Support.
- Due to small dimensional variations in the hand-crafting process of sinks, cutout templates are not provided. We recommends using the actual sink for the countertop cutout. Do not start the cutout or cabinet prep process before having the sink in hand.
- It is recommended that you discuss with customer the desired installation method prior to installation. We are not responsible for improper installation or damage to sink, cabinet or countertop.
- sinks are heavy. Please use assistance when lifting to avoid injury.
- Observe all local plumbing and building codes.

MATERIALS AND TOOLS NEEDED

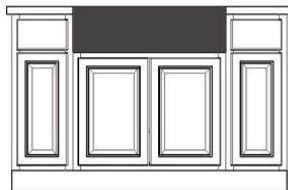
- Plumber's Putty
- Level
- Drill
- Silicon Caulk
- Framing Square
- Jigsaw or Keyhole Saw
- Pencil
- Tape Measure
- Safety Glasses

INSTALLATION OPTIONS

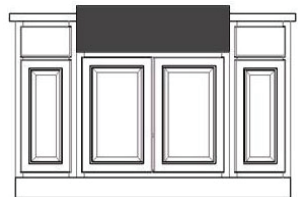
- We recommends UNDERMOUNT installation for this farmhouse sink, but it can also be installed FLUSHMOUNT or RAISED, depending on customer design preference:



Undermount



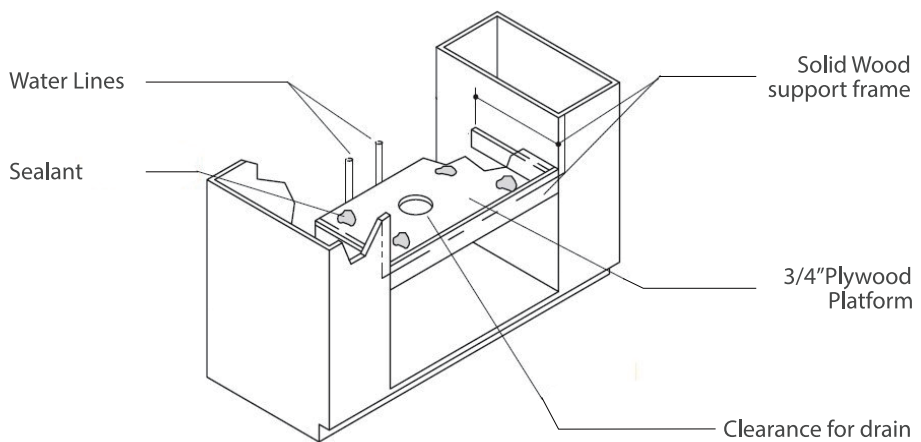
Flush-mount



Raised

BASE CABINET PREPARATION AND SUPPORT FRAME

- This sink requires custom cabinetry or modification of stock cabinet to ensure proper fit and support. A solid wood SUPPORT FRAME must be constructed under the sink (Figure 2). The support frame must be able to hold up to 300 lbs (weight of the sink when full). Some of the stock cabinets available in the market are made of cheap MDF particle boards and may not have the strength and durability to support a heavy sink. We strongly recommends that you consult a professional carpenter or custom cabinet maker for this part of the project.
- The front of the our sinks are designed to extend slightly beyond the front face of the cabinet. The sink may extend maximum 1-1/4" beyond the front face of the cabinet.
- Build a support frame inside the cabinet using solid hardwood such as 2-by-4. Two support bars on the two sides going front-to-back as well as a cross bar on the front that goes from left to right. An additional cross-bar can also be installed to run under the back of the sink.
- If the sidewalls of the cabinet are not strong enough, you should install vertical legs that run from under the support frame all the way to the floor.
- Secure a 3/4" thick plywood platform on top of the support frame. The sink will be sitting on top of this platform. Make necessary cutouts in the platform for the sink drain or garbage disposal. Ensure clearance behind the support frame for faucet water supply lines.
- For undermount installation, when you place the sink on the platform, the top of the sink rim should be level and flush with top surface of cabinet sidewalls. Use shims if needed to level the sink. If sink is not perfectly level horizontally, it can cause issue with water drainage inside the sink when you are using it.



COUNTERTOP PREPARATION

- No cutout template is provided due to the custom nature of each installation, and due to small dimensional variations in the handcrafting process of the sinks. The actual sink should be used as a template guide for each installation
- The countertop cutout can be customized based on your design preference. We recommends a 1/8" - 1/4" positive reveal on the two sides and back (Figure 3). You can also decide to go with a zero reveal (flush with the edge of the countertop cutout) or 1/4" negative reveal (countertop overhangs on top of the sink).
- Any solid countertop such as granite, marble, quartz, cultured stone, or butcher block can be used with a sink. Laminate countertops are not recommended. Countertop preparation and cutout should only be done by a professional installer or fabricator.
- Once countertop cutout is complete, clean the bottom of the countertop and rim of the sink with denatured alcohol. Apply a bead of silicone around the top edge of the sink on 2 sides and back. Place countertop onto the sink. Remove and clean off excess silicone before it dries out.

• 1/4" Positive Reveal

The countertop edge sits approximately 1/4" back from the edge of the sink and exposes the rim of the sink.



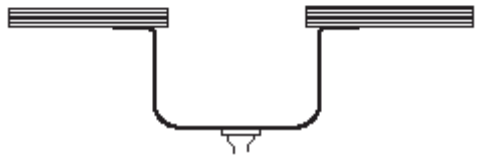
• Zero Reveal (Flush Fit)

The countertop meets the edge of the sink, fitting flush with the sink bowl.

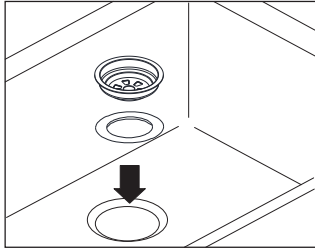


• 1/4" Overhang

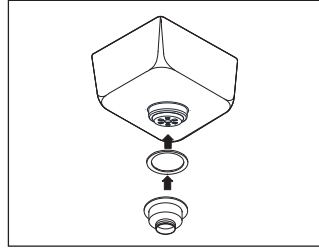
The countertop extends 1/4" over the edge of the sink on all sides.



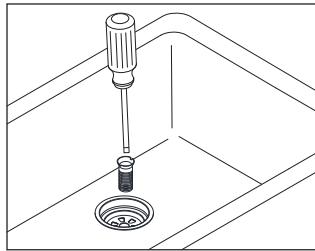
Strainer Installation Guide



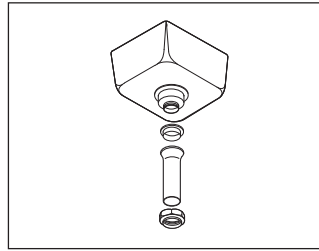
Step1: Taking apart the sink strainer, put the upper strainer body and white gasket into the sink hole



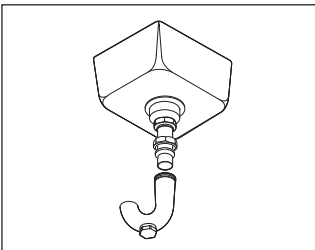
Step2: Put the lower strainer and black gasket connect to the upper part under the sink.



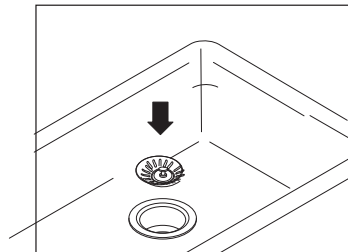
Step3: Fix the upper and lower parts with screws



Step4: Connect the draintail-piece



Step5: Connect the trap. Run water and check for leaks.



Step 6: Insert the basket.

Installation tools are not provided, please choose the appropriate installation tools

