

# Installation

①



Place two units next to each other's frames. Hold the peg of the upper drill level with the hole of the lower hinge.

②



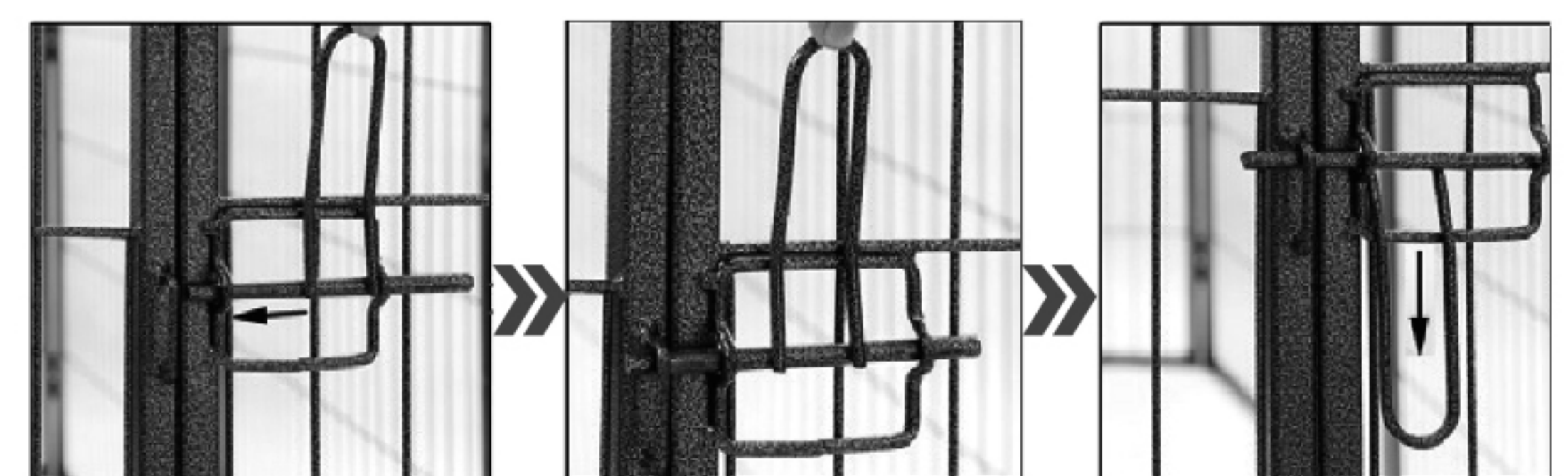
Hook the upper hinge part onto the lower part.

③



Combine the other units in the same manner.

④



Lock the swing door by gripping the handle of the bar and pushing it into the latch.

## Security Instructions

### Intended use

- This equipment is for guarding puppies. It is designed to be used this way and may only be used in this manner.
- Do not use this equipment as a playpen for children.
- Little children may not be requested to install the puppy kennel. They must not operate the bolt by themselves. There is a risk of entrapping fingers or the hand.
- The puppy kennel is not suitable as a kennel for big dogs.

**RETAIN FOR FUTURE REFERENCE**