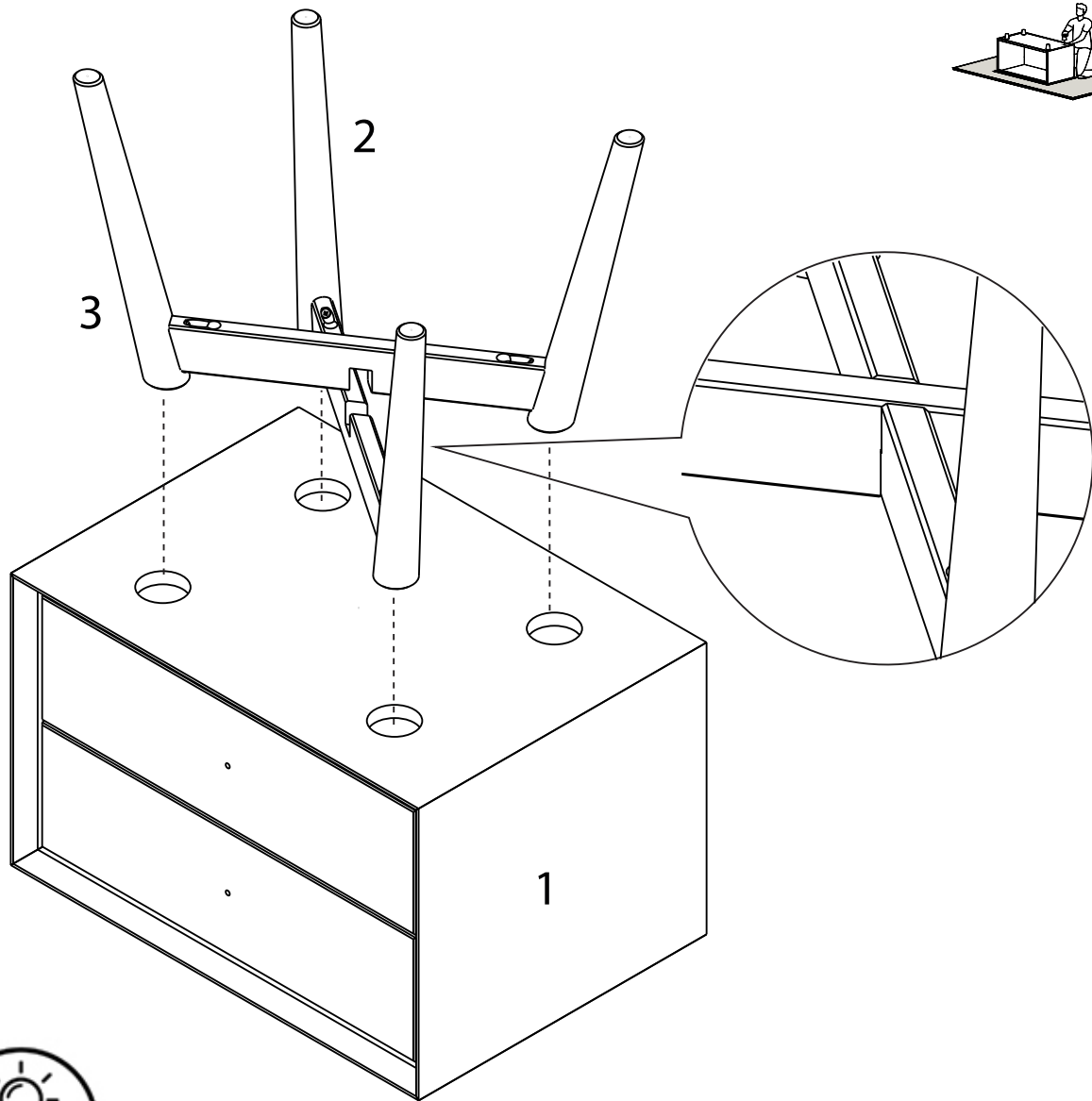


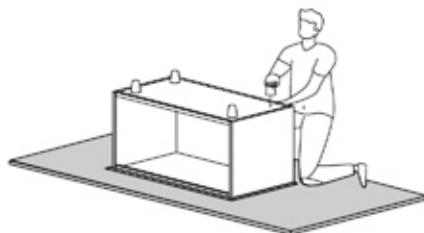
# Step 1

Let's get started. Start by inserting Legs (2) and (3) into Body Base (1) holes.



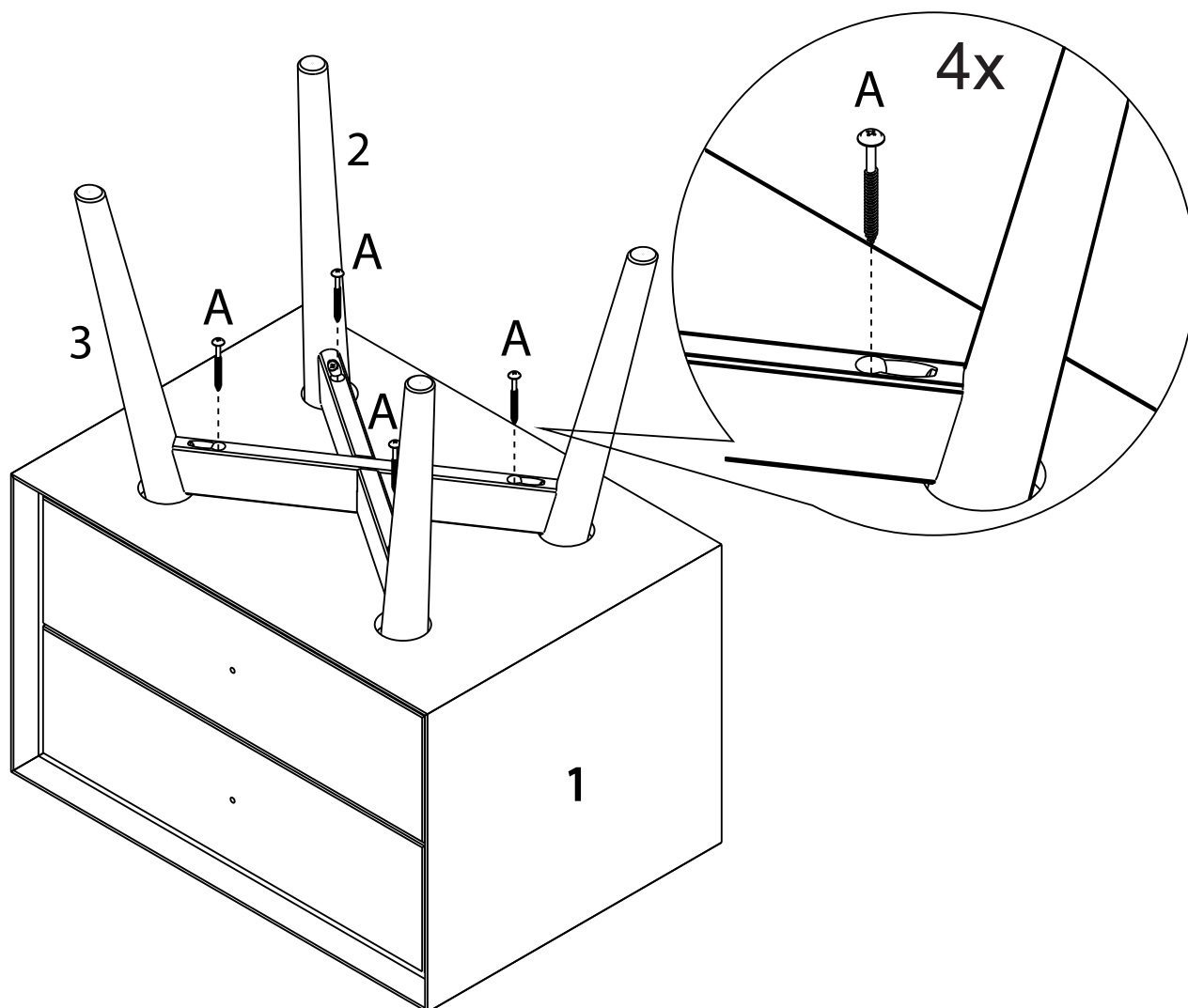
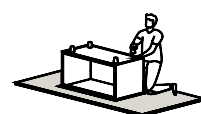
Tip

To keep your product looking its best and scratch-free, try assembling it on a soft surface like carpet or a blanket. This helps prevent any accidental scratches and keeps your furniture in top shape!



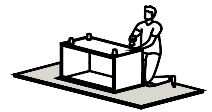
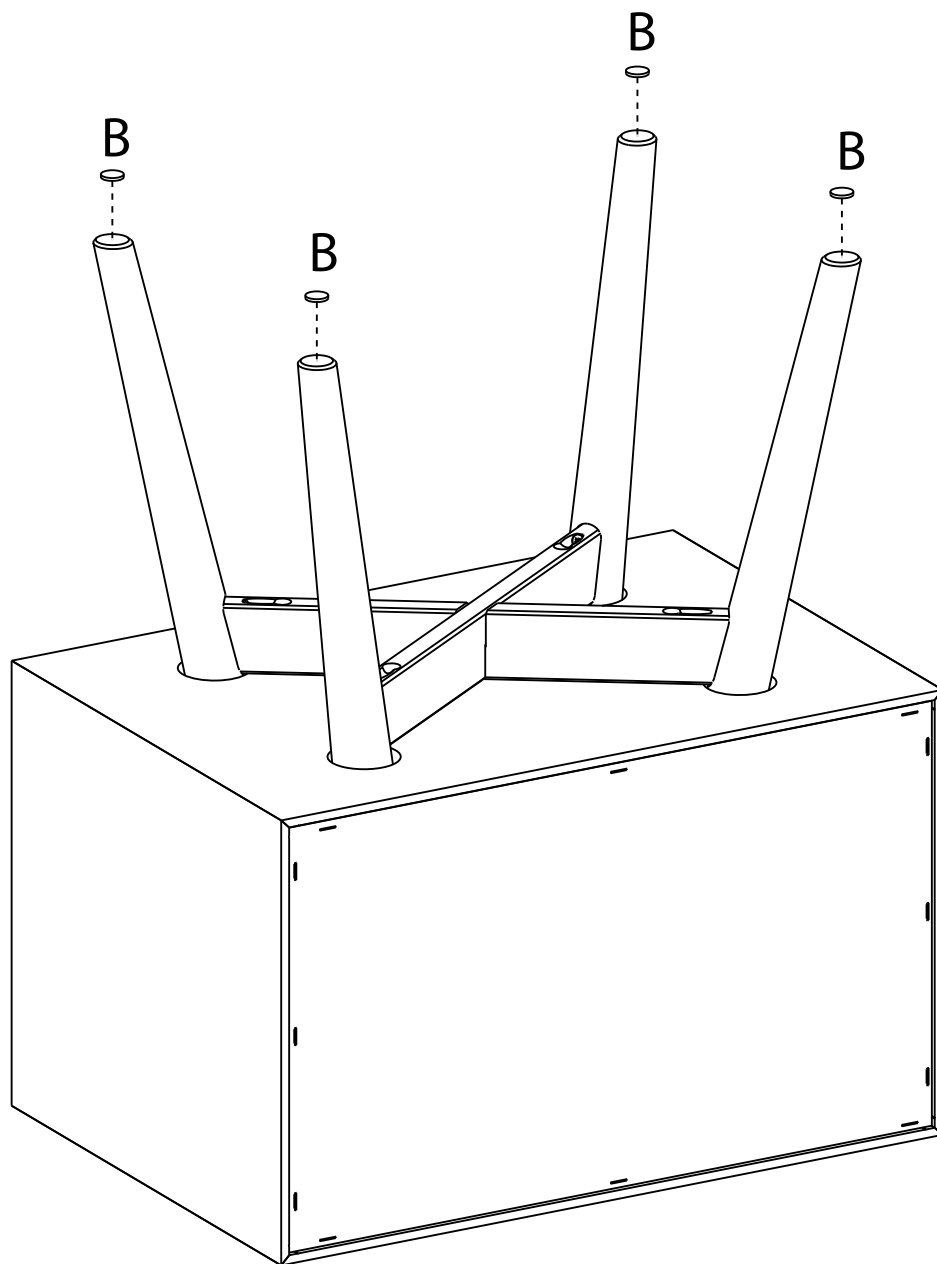
## Step 2

Attach legs (2) and (3), to the Body base (1) using all screws (A) and a Phillips head screwdriver.



# Step 3

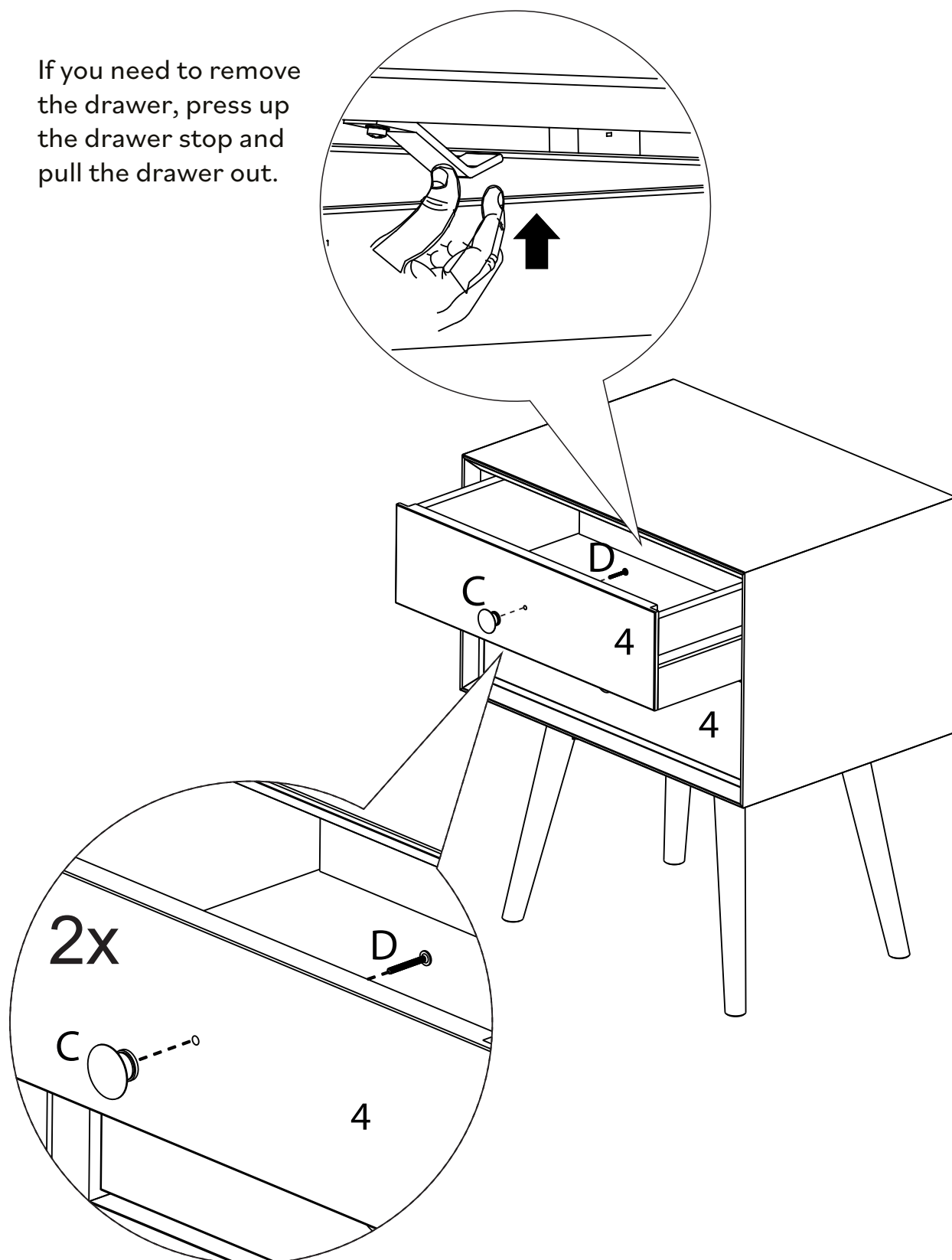
If the floor is uneven, use Felt pads (B) on the legs.



# Step 4

Attach Knob (C) to Drawer front (4), with screw (D) using a Phillips head screwdriver.

If you need to remove the drawer, press up the drawer stop and pull the drawer out.



You did it! Enjoy your new Nightstand!

